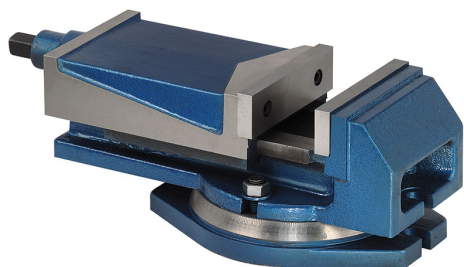


WITH INTERCHANGEABLE JAWS IN HARDENED AND GROUND STEEL.
SLIDING PARTS GROUND. FULLY COVERED SCREW. WITH CRANK.



Jaws	200 x 61 mm
Opening	160 mm g
Overall sizes	490 x 270 x 175h mm
Base dimensions	360 x 280 mm
Slot distance	315 mm
Slot	18 mm
Net weight	47 kg
Gross weight	49,50 kg
EAN Code	8012667003050



Box



Cast Iron