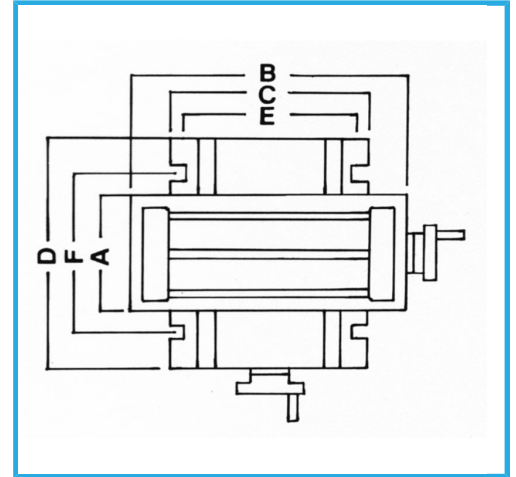
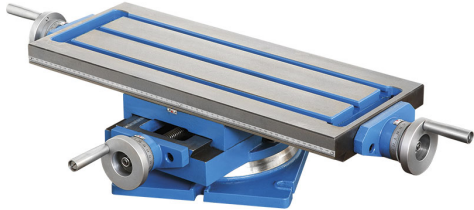


EQUIPPED WITH A SWIVEL BASE. WITH COOLANT CHANNELS.
ADJUSTABLE HANDWHEEL GRADUATION.



A	240 mm
B	600 mm
C	280 mm
D	340 mm
E	260 mm
F	250 mm
Slot	12 mm
Height	160 mm
Travels	155 x 370 mm
Signs	0,02 mm
Net weight	60 kg
Packaging dimensions	780x440x220 h mm
Gross weight	60,00 kg
EAN Code	8012667248376



Wooden Box



Cast Iron