



# ***THE CATALOGUE***

THE CATALOGUE FOR  
MRO PROFESSIONALS  
[MAINTENANCE,  
REPAIR AND  
OPERATIONS]

# 46



## THE OPTIMAL SOLUTION TO FURNISH YOUR WORKSHOP, YOUR GARAGE OR YOUR RACING CORNER

CHOOSE FROM THE COMPOSITIONS CREATED FOR YOU BY FERVI OR CONFIGURE YOUR MODULAR AND SELF-SUPPORTING WORKSHOP FURNITURE ACCORDING TO YOUR NEEDS

### A007/07

#### PANELS CONNECTOR

NECESSARY TO CONNECT THE MODULES

### A007/02

#### TALL CABINET WITH 3 SHELVES

### A007/10

#### HANGING PANEL

### A007/01

#### WALL CABINET

TO FIX ON THE HANGER PANEL

### A007/11

#### HALF PANEL CONNECTOR

TO END THE CONFIGURATION WITHOUT THE CABINET

### A007/09

#### WORK PLATES

AVAILABLE IN 3 MEASUREMENTS AND 2 MATERIALS

### A007/03

#### DOOR CABINET

IT MUST BE INSERTED IN THE CENTRAL SPACE OF A 3-MODULE PLAN

### A007/06

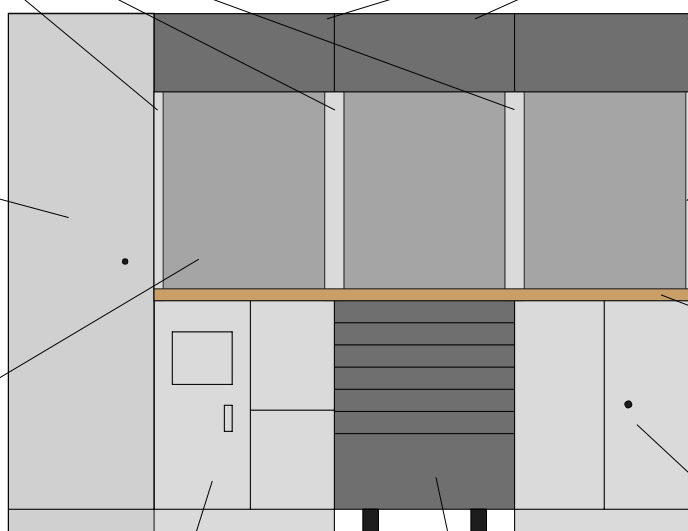
#### MULTIFUNCTION CABINET

### A007/16

#### ROLLING CABINET

WITH 7 DRAWERS ON BALL BEARING SLIDE

EXAMPLE OF CONFIGURATION WITH THREE MODULES WITH CABINET



**A007A****WORKSHOP MODULAR FURNITURES**

The optimal solution to furnish your workshop, your garage or your racing corner.

- 4 WALL CABINET WITH SPRING GAS [A007/01]
- 2 TALL CABINETS WITH 3 SHELVES [A007/02]
- 1 DOOR CABINET WITH ONE SHELF [A007/03]
- 1 TOOL CABINET WITH 4 DRAWERS ON BALL BEARING SLIDE [A007/04]
- 2 TOOL CABINETS WITH 5 DRAWERS ON BALL BEARING SLIDES [A007/05]
- 5 PANELS CONNECTORS [A007/07]
- 2 WOOD PLATES [A007/08]
- 4 HANGING PANELS [A007/10]

Dimensions

3920 x 498 x 2000h mm

**A007B****WORKSHOP MODULAR FURNITURES**

The optimal solution to furnish your workshop, your garage or your racing corner.

- 4 WALL CABINET WITH SPRING GAS [A007/01]
- 2 TALL CABINETS WITH 3 SHELVES [A007/02]
- 1 DOOR CABINET WITH ONE SHELF [A007/03]
- 2 TOOL CABINETS WITH 5 DRAWERS ON BALL BEARING SLIDES [A007/05]
- 1 MULTIFUNCTION CABINET [A007/06]
- 5 PANELS CONNECTORS [A007/07]
- 2 WOOD PLATES [A007/08]
- 4 HANGING PANELS [A007/10]

Dimensions

3920 x 498 x 2000h mm

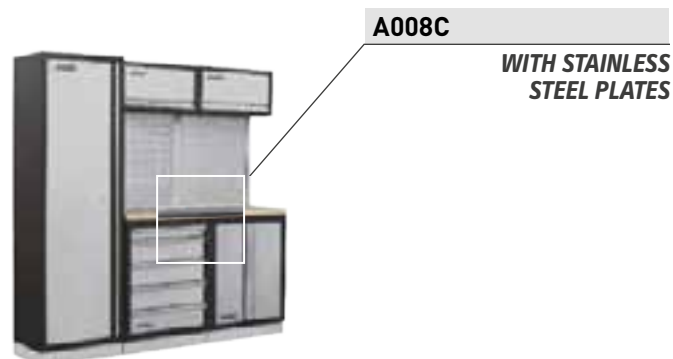
**A007C****WORKSHOP MODULAR FURNITURES**

The optimal solution to furnish your workshop, your garage or your racing corner.

- 2 WALL CABINET WITH SPRING GAS [A007/01]
- 1 TALL CABINET WITH 3 SHELVES [A007/02]
- 1 DOOR CABINET WITH ONE SHELF [A007/03]
- 1 TOOL CABINETS WITH 5 DRAWERS ON BALL BEARING SLIDES [A007/05]
- 2 HANGING PANELS [A007/10]
- 2 PANELS CONNECTORS [A007/07]
- 1 WOOD PLATE [A007/08]
- 2 HANGING PANELS [A007/10]
- 1 HALF PANEL CONNECTOR [A007/11]

Dimensions

1960 x 498 x 2000h mm

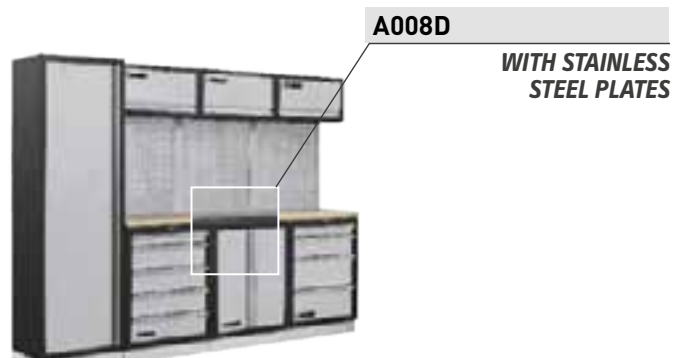
**A007D****WORKSHOP MODULAR FURNITURES**

The optimal solution to furnish your workshop, your garage or your racing corner.

- 3 WALL CABINET WITH SPRING GAS [A007/01]
- 1 TALL CABINET WITH 3 SHELVES [A007/02]
- 1 DOOR CABINET WITH ONE SHELF [A007/03]
- 1 TOOL CABINET WITH 4 DRAWERS ON BALL BEARING SLIDE [A007/04]
- 1 TOOL CABINETS WITH 5 DRAWERS ON BALL BEARING SLIDES [A007/05]
- 3 PANELS CONNECTORS [A007/07]
- 1 WOOD PLATE [A007/08]
- 3 HANGING PANELS [A007/10]
- 1 HALF PANEL CONNECTOR [A007/11]

Dimensions

2640 x 498 x 2000h mm



## A007E

### WORKSHOP MODULAR FURNITURES

The optimal solution to furnish your workshop, your garage or your racing corner.

- 3 WALL CABINET WITH SPRING GAS [A007/01]
- 1 TALL CABINET WITH 3 SHELVES [A007/02]
- 1 DOOR CABINET WITH ONE SHELF [A007/03]
- 1 MULTIFUNCTION CABINET [A007/06]
- 3 PANELS CONNECTORS [A007/07]
- 1 WOOD PLATE [A007/09]
- 3 HANGING PANELS [A007/10]
- 1 ROLLING CABINET WITH 7 DRAWERS ON BALL BEARING SLIDE [A007/16]

Dimensions 2640 x 498 x 2000h mm



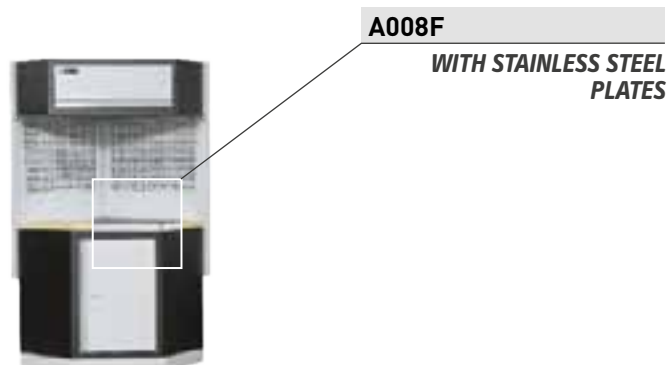
## A007F

### CORNER FOR WORKSHOP MODULAR FURNITURES

The optimal solution to furnish your workshop, your garage or your racing corner.

- 2 PANELS CONNECTORS [A007/07]
- 2 HALF PANEL CONNECTORS [A007/11]
- 2 CORNER HANGING PANELS [A007/12]
- 1 CORNER CABINET [A007/13]
- 1 CORNER WOOD PLATE [A007/14]
- 1 CORNER DOOR CABINET [A007/15]

Dimensions 864 x 864 x 2000h mm



## A007G

### WORKSHOP MODULAR FURNITURES

The optimal solution to furnish your workshop, your garage or your racing corner.

- 3 WALL CABINET WITH SPRING GAS [A007/01]
- 1 TALL CABINET WITH 3 SHELVES [A007/02]
- 1 DOOR CABINET WITH ONE SHELF [A007/03]
- 1 MULTIFUNCTION CABINET [A007/06]
- 3 PANELS CONNECTORS [A007/07]
- 1 WOOD PLATE [A007/09]
- 3 HANGING PANELS [A007/10]
- 1 HALF PANEL CONNECTOR [A007/11]
- 1 TOOL CABINETS WITH 7 DRAWERS ON BALL BEARING SLIDES [A007/1]

Dimensions 2640 x 498 x 2000h mm

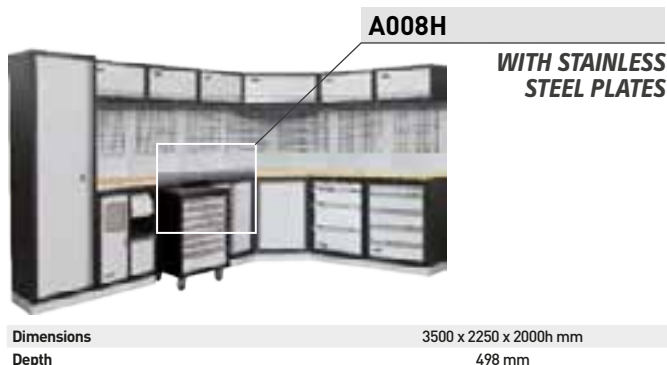


## A007H

### WORKSHOP MODULAR FURNITURES

The optimal solution to furnish your workshop, your garage or your racing corner.

- 5 WALL CABINET WITH SPRING GAS [A007/01]
- 1 TALL CABINETS WITH 3 SHELVES [A007/02]
- 1 DOOR CABINET WITH ONE SHELF [A007/03]
- 1 TOOL CABINET WITH 4 DRAWERS ON BALL BEARING SLIDE [A007/04]
- 1 TOOL CABINET WITH 5 DRAWERS ON BALL BEARING SLIDE [A007/05]
- 1 MULTI FUNCTION CABINET [A007/06]
- 6 PANELS CONNECTORS [A007/07]
- 1 WOOD PLATE [A007/08]
- 1 WOOD PLATE [A007/09]
- 5 HANGING PANELS [A007/10]
- 3 HALF PANEL CONNECTORS [A007/11]
- 2 CORNER HANGING PANELS [A007/12]
- 1 CORNER CABINET [A007/13]
- 1 CORNER WOOD PLATE [A007/14]
- 1 CORNER DOOR CABINET [A007/15]
- 1 ROLLING CABINET WITH 7 DRAWERS ON BALL BEARING SLIDE [A007/16]



Dimensions 3500 x 2250 x 2000h mm  
Depth 498 mm

**A007I****WORKSHOP MODULAR FURNITURES**

The optimal solution to furnish your workshop, your garage or your racing corner.

- 2 WALL CABINET WITH SPRING GAS [A007/01]
- 1 TALL CABINETS WITH 3 SHELVES [A007/02]
- 1 MULTI FUNCTION CABINET [A007/06]
- 2 PANELS CONNECTORS [A007/07]
- 1 WOOD PLATE [A007/08]
- 2 HANGING PANELS [A007/10]
- 1 HALF PANEL CONNECTOR [A007/11]
- 1 TOOL CABINET WITH 7 DRAWERS ON BALL BEARING SLIDE [A007/17]

Dimensions

1960 x 498 x 2000h mm

**A008I**

WITH STAINLESS STEEL PLATES

**A007L****WORKSHOP MODULAR FURNITURES**

The optimal solution to furnish your workshop, your garage or your racing corner.

- 4 WALL CABINET WITH SPRING GAS [A007/01]
- 2 TALL CABINETS WITH 3 SHELVES [A007/02]
- 1 DOOR CABINET WITH ONE SHELF [A007/03]
- 1 TOOL CABINET WITH 4 DRAWERS ON BALL BEARING SLIDE [A007/04]
- 1 MULTI FUNCTION CABINET [A007/06]
- 6 PANELS CONNECTORS [A007/07]
- 2 WOOD PLATES [A007/08]
- 4 HANGING PANELS [A007/10]
- 2 HALF PANEL CONNECTORS [A007/11]
- 2 CORNER HANGING PANELS [A007/12]
- 1 CORNER CABINET [A007/13]
- 1 CORNER WOOD PLATE [A007/14]
- 1 CORNER DOOR CABINET [A007/15]
- 1 TOOL CABINET WITH 7 DRAWERS ON BALL BEARING SLIDE [A007/17]

**A008L**

WITH STAINLESS STEEL PLATES

Dimensions

2800 x 2800 x 2000h mm

Depth

498 mm

**A007M****WORKSHOP MODULAR FURNITURES**

The optimal solution to furnish your workshop, your garage or your racing corner.

- 2 WALL CABINET WITH SPRING GAS [A007/01]
- 1 DOOR CABINET WITH ONE SHELF [A007/03]
- 1 TOOL CABINET WITH 5 DRAWERS ON BALL BEARING SLIDE [A007/05]
- 2 PANELS CONNECTORS [A007/07]
- 1 WOOD PLATE [A007/08]
- 2 HANGING PANELS [A007/10]
- 2 HALF PANEL CONNECTORS [A007/11]

Dimensions

1360 x 498 x 2000h mm

**A008M**

WITH STAINLESS STEEL PLATES

**A007N****WORKSHOP MODULAR FURNITURES**

The optimal solution to furnish your workshop, your garage or your racing corner.

- 3 WALL CABINET WITH SPRING GAS [A007/01]
- 1 DOOR CABINET WITH ONE SHELF [A007/03]
- 1 TOOL CABINET WITH 4 DRAWERS ON BALL BEARING SLIDE [A007/04]
- 1 TOOL CABINET WITH 5 DRAWERS ON BALL BEARING SLIDE [A007/05]
- 3 PANELS CONNECTORS [A007/07]
- 1 WOOD PLATE [A007/08]
- 3 HANGING PANELS [A007/10]
- 2 HALF PANEL CONNECTORS [A007/11]

Dimensions

2040 x 498 x 2000h mm

**A008N**

WITH STAINLESS STEEL PLATES

## A007P

### WORKSHOP MODULAR FURNITURES

The optimal solution to furnish your workshop, your garage or your racing corner.

- 4 WALL CABINET WITH SPRING GAS [A007/01]
- 2 TALL CABINETS WITH 3 SHELVES [A007/02]
- 1 DOOR CABINET WITH ONE SHELF [A007/03]
- 1 MULTIFUNCTION CABINET [A007/06]
- 5 PANELS CONNECTORS [A007/07]
- 1 WOOD PLATE [A007/09]
- 4 HANGING PANELS [A007/10]
- 1 TOOL CABINET WITH 7 DRAWERS ON BALL BEARING SLIDES [A007/16]
- 1 WOOD PLATE [A007/19]
- 1 TOOL CABINET WITH 9 DRAWERS ON BALL BEARING SLIDES [A007/20]

Dimensions

3920 x 498 x 2000h mm

## A008P

**WITH STAINLESS STEEL PLATES**



## A007Q

### WORKSHOP MODULAR FURNITURES

The optimal solution to furnish your workshop, your garage or your racing corner.

- 2 WALL CABINET WITH SPRING GAS [A007/01]
- 1 TALL CABINET WITH 3 SHELVES [A007/02]
- 1 TOOL CABINET WITH 4 DRAWERS ON BALL BEARING SLIDE [A007/04]
- 2 PANELS CONNECTORS [A007/07]
- 1 WOOD PLATE [A007/08]
- 2 HANGING PANELS [A007/10]
- 1 HALF PANEL CONNECTOR [A007/11]
- 1 TOOL CABINET WITH 9 DRAWERS ON BALL BEARING SLIDE [A007/20]

Dimensions

1960 x 498 x 2000h mm

## A008Q

**WITH STAINLESS STEEL PLATES**



## A007R

### WORKSHOP MODULAR FURNITURES

The optimal solution to furnish your workshop, your garage or your racing corner.

- 1 WALL CABINET WITH SPRING GAS [A007/01]
- 2 PANELS CONNECTORS [A007/07]
- 1 HANGING PANEL [A007/10]
- 2 HALF PANEL CONNECTORS [A007/11]
- 1 WOOD PLATE [A007/19]
- 1 TOOL CABINET WITH 9 DRAWERS ON BALL BEARING SLIDE [A007/20]

Dimensions

680 x 498 x 2000h mm

## A008R

**WITH STAINLESS STEEL PLATES**



## A007S

### WORKSHOP MODULAR FURNITURES

The optimal solution to furnish your workshop, your garage or your racing corner.

- 3 WALL CABINET WITH SPRING GAS [A007/01]
- 1 TALL CABINET WITH 3 SHELVES [A007/02]
- 1 DOOR CABINET WITH ONE SHELF [A007/03]
- 3 PANELS CONNECTORS [A007/07]
- 1 WOOD PLATE [A007/09]
- 3 HANGING PANELS [A007/10]
- 1 HALF PANEL CONNECTOR [A007/11]
- 1 TOOL CABINETS WITH 9 DRAWERS ON BALL BEARING SLIDES [A007/20]
- 1 TROLLEY WITH 3 SHELVES [A007/22]

Dimensions

2640 x 498 x 2000h mm

## A008S

**WITH STAINLESS STEEL PLATES**



**A007T****WORKSHOP MODULAR FURNITURES**

The optimal solution to furnish your workshop, your garage or your racing corner.

- 2 WALL CABINET WITH SPRING GAS [A007/01]
- 1 DOOR CABINET WITH ONE SHELF [A007/03]
- 1 TOOL CABINETS WITH 5 DRAWERS ON BALL BEARING SLIDES [A007/05]
- 2 PANELS CONNECTORS [A007/07]
- 1 WOOD PLATE [A007/08]
- 2 HANGING PANELS [A007/10]
- 1 HALF PANEL CONNECTOR [A007/11]
- 1 2 DOOR TALL CABINET WITH 3 SHELVES [A007/23]

Dimensions

2275 x 498 x 2000h mm

**A007U****WORKSHOP MODULAR FURNITURES**

The optimal solution to furnish your workshop, your garage or your racing corner.

- 3 WALL CABINET WITH SPRING GAS [A007/01]
- 1 TALL CABINET WITH 3 SHELVES [A007/02]
- 1 DOOR CABINET WITH ONE SHELF [A007/03]
- 3 PANELS CONNECTORS [A007/07]
- 1 WOOD PLATE [A007/09]
- 3 HANGING PANELS [A007/10]
- 1 HALF PANEL CONNECTOR [A007/11]
- 1 TOOL CABINET WITH 7 DRAWERS ON BALL BEARING SLIDES [A007/17]
- 1 HOSE REELS CABINET [A007/18]

Dimensions

2640 x 498 x 2000h mm

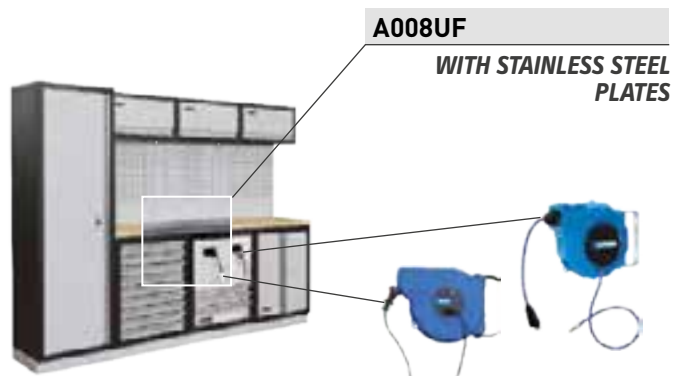
**A007UF****WORKSHOP MODULAR FURNITURES**

The optimal solution to furnish your workshop, your garage or your racing corner.

- 3 WALL CABINET WITH SPRING GAS [A007/01]
- 1 TALL CABINET WITH 3 SHELVES [A007/02]
- 1 DOOR CABINET WITH ONE SHELF [A007/03]
- 3 PANELS CONNECTORS [A007/07]
- 1 WOOD PLATE [A007/09]
- 3 HANGING PANELS [A007/10]
- 1 HALF PANEL CONNECTOR [A007/11]
- 1 TOOL CABINET WITH 7 DRAWERS ON BALL BEARING SLIDES [A007/17]
- 1 HOSE REELS CABINET [A007/18]
- 1 AUTO RE-ENTERING CABLE REEL [0621/A3]
- 1 AUTO REWIND AIR HOSE REEL [0481/15]

Dimensions

2640 x 498 x 2000h mm

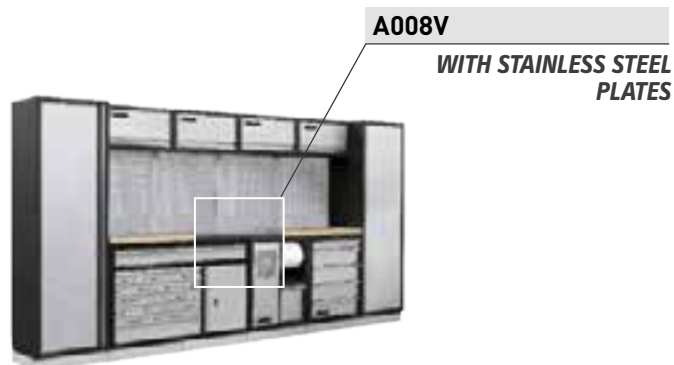
**A007V****WORKSHOP MODULAR FURNITURES**

The optimal solution to furnish your workshop, your garage or your racing corner.

- 4 WALL CABINET WITH SPRING GAS [A007/01]
- 2 TALL CABINETS WITH 3 SHELVES [A007/02]
- 1 TOOL CABINET WITH 5 DRAWERS ON BALL BEARING SLIDES [A007/05]
- 1 MULTIFUNCTION CABINET [A007/06]
- 5 PANELS CONNECTORS [A007/07]
- 1 WOOD PLATE [A007/08]
- 4 HANGING PANELS [A007/10]
- 1 LARGE AMERICAN TOOL CABINET [A007/21]

Dimensions

3920 x 498 x 2000h mm



**A007/02**
**TALL CABINET**

With 3 shelves.

Dimensions	600 x 458 x 2000 mm
Door dimensions	510 x 1810 mm
Internal depth	410 mm
Maximum capacity	180 kg


**A007/23**
**2 DOOR TALL CABINET**

With 5 shelves.

Dimensions	915 x 458 x 2000 mm
Door dimensions	510 x 1810 mm
Internal depth	410 mm
Maximum capacity	300 kg


**A007/03**
**DOOR CABINET**

With one shelf.

Dimensions	680 x 458 x 910 mm
Door dimensions	710 x 295 mm
Internal depth	445 mm
Maximum capacity	60 kg


**A007/06**
**MULTIFUNCTION CABINET**

Dimensions	680 x 458 x 910 mm
Door dimensions	710 x 295 mm
Internal depth	445 mm
Drawer dimensions	240 x 300 mm
Maximum paper roll height	240 mm
Maximum capacity	90 kg


**A007/18**
**HOSE REELS CABINET**

Dimensions	680 x 458 x 910 mm
Drawer capacity	30 kg


**A007/04**
**TOOL CABINET WITH 4 DRAWERS**

On ball bearing slide.

Dimensions	680 x 458 x 910 mm
Drawer dimensions	550 x 400 mm
Drawers height	1 x 68 mm - 1 x 145 mm - 2 x 214 mm
Drawer capacity	30 kg


**A007/05**
**TOOL CABINET WITH 5 DRAWERS**

On ball bearing slide.

Dimensions	680 x 458 x 910 mm
Drawer dimensions	550 x 400 mm
Drawers height	1 x 68 mm - 4 x 145 mm
Drawer capacity	30 kg


**A007/17**
**TOOL CABINET WITH 7 DRAWERS**

On ball bearing slide.

Dimensions	680 x 458 x 910 mm
Drawer dimensions	550 x 400 mm
Drawers height	5 x 74.5 mm - 2 x 153.5 mm
Drawer capacity	30 kg



**A007/20****TOOL CABINET WITH 9 DRAWERS**

On ball bearing slide.



Dimensions	680 x 458 x 910 mm
Drawer dimensions	550 x 400 mm
Drawers height	9 x 74,5 mm
Drawer capacity	30 kg

**A007/16****ROLLING CABINET**

With 7 drawers on ball bearing slide.



Dimensions	660 x 455 x 860 mm
Drawer dimensions	525 x 400 mm
Internal depth	6 x 68 mm - 1 x 145 mm
Drawer capacity	30 kg

**A007/211****LARGE AMERICAN TOOL CABINET**

With stainless steel top.



Dimensions	1360 x 458 x 948,5 mm
Door dimensions	535 x 430 mm
Drawer dimensions	1 - 1285 x 400 mm   6 - 810 x 400 mm
Drawers height	1 x 123,5 mm - 5 x 74,5 mm - 1 x 153,5 mm
Drawer capacity	30 kg

**A007/10****HANGING PANEL**

Dimensions	1052 x 614,5 x 24 mm
Maximum capacity	10 kg

**A007/22****TROLLEY**

With 3 shelves.



Dimensions	648 x 458 x 865 mm
------------	--------------------

**A007/21****LARGE AMERICAN TOOL CABINET**

With wooden top.



Dimensions	1360 x 458 x 945 mm
Door dimensions	535 x 430 mm
Drawer dimensions	1 - 1285 x 400 mm   6 - 810 x 400 mm
Drawers height	1 x 123,5 mm - 5 x 74,5 mm - 1 x 153,5 mm
Drawer capacity	30 kg

**A007/01****WALL CABINET**

With spring gas.



Dimensions	680 x 281 x 350 mm
Door dimensions	610 x 280 mm
Internal depth	280 mm
Maximum capacity	15 kg

**A007/07****PANELS CONNECTOR****A007/11****HALF PANEL CONNECTOR**

## A007-xP

### WORK PLATES

Art.	Module	Material	Dimensions	Thickness
A007/08	2	Wood	1360 x 460 mm	35 mm
A007/08I	2	Stainless steel	1360 x 460 mm	35 mm
A007/09	3	Wood	2040 x 460 mm	35 mm
A007/09I	3	Stainless steel	2040 x 460 mm	35 mm
A007/19	1	Wood	680 x 460 mm	35 mm
A007/19I	1	Stainless steel	680 x 460 mm	35 mm



## A007/LED

### LED LIGHT FOR WORKSHOP MODULAR FURNITURES

With bi-adhesive tape, to be used in coupling with A007/Led/C charger. Two Led strips can be connected in series.



Box

## A007/LED/C

### LED LIGHT POWER SUPPLY



Box

## P40VD

### FOOTBOARDS

Mountable, green draining self locking footboard.



Polyprop.

Dimensions 400 x 400 x 48 mm  
Pcs. - Pallet 120 = 20 m<sup>2</sup>

## PSV-F

### POLYPROPYLENE SLIDE

Mountable for footboards, green, female (without hooks).



Polyprop.

Dimensions 205 x 400 x 48 mm

## PSV-M

### POLYPROPYLENE SLIDE

Mountable for footboards, green, male (with hooks).



Polyprop.

Dimensions 205 x 400 x 48 mm

## PAV

### CORNER SLIDES

For mountable polypropylene footboards, kit of 4 green corner slides.



4 Pcs



Polyprop.

Dimensions 200 x 200 x 270 x 48 mm

**B015****STEEL WORKBENCH KIT**

With steel top and two lockable drawers.



Bench dimensions	1500 x 645 x 865h mm
Legs thickness	1 mm
Plate thickness	2 mm
Capacity	800 kg
Drawer dimensions	433 x 347 x 122h mm
Drawer capacity	30 kg
Net weight	62 kg

**B015/10****WORKBENCH KIT**

With steel top and lockable drawer.



Dimensions	1000 x 640 x 865h mm
Legs thickness	2 mm
Plate thickness	2 mm
Capacity	600 kg
Drawer dimensions	433 x 347 x 122h mm
Drawer capacity	30 kg
Net weight	55 kg

**B022/10****WORKBENCH KIT**

With wood press top and a lockable drawer.



Dimensions	1000 x 640 x 865h mm
Legs thickness	2 mm
Plate thickness	38 mm
Capacity	350 kg
Drawer dimensions	400 x 344 x 125h mm
Drawer capacity	50 kg
Net weight	47 kg

**B022/15****WORKBENCH KIT**

With wood press top and 2 lockable drawers.



Dimensions	1500 x 640 x 865h mm
Legs thickness	2 mm
Plate thickness	38 mm
Capacity	350 kg
Drawer dimensions	400 x 344 x 125h mm
Drawer capacity	50 kg
Net weight	75 kg

**B017/C****DRAWER RACK WITH LOCK**

On ball bearing made of steel, suitable to benches of other brands.



Overall dimensions	680 x 270 x 130 mm
Internal dimensions	640 x 260 x 90 mm
Capacity	18,5 kg
Net weight	4,3 kg



**B009/A1**
**WORKBENCH KIT**

With wood press top, 3 lockable drawers, 1 shelf and adjustable feet.



**UPGRADE**

Dimensions	1200 x 600 x 865h mm
Legs thickness	2 mm
Plate thickness	36 mm
Capacity	350 kg
Net weight	62 kg

**B009/B1**
**WORKBENCH KIT**

With wood press top, 3 lockable drawers, 1 shelf with door and adjustable feet.



**UPGRADE**

Dimensions	1200 x 600 x 865h mm
Legs thickness	2 mm
Plate thickness	36 mm
Capacity	350 kg
Net weight	64,5 kg

**B009/A2**
**WORKBENCH KIT**

With wood press top, 3 lockable drawers, 1 door and shelf and adjustable feet



**UPGRADE**

Dimensions	1690 x 600 x 865 mm
Legs thickness	2 mm
Plate thickness	36 mm
Capacity	350 kg
Net weight	84 kg

**B009/B2**
**WORKBENCH KIT**

With wood press top, 3 lockable drawers, 2 shelves with door and adjustable feet



**UPGRADE**

Dimensions	1690 x 600 x 865 mm
Legs thickness	2 mm
Plate thickness	36 mm
Capacity	350 kg
Net weight	90 kg

**B019**
**FOLDABLE HEAVY DUTY WORKBENCH**

Made of steel, tear down structure with 2 powerful gas struts, peg board 1195 x 458 x 20 mm, main leg height 1380 mm, total width for the product 1280 mm, depth of the open/close product 648/130 mm at a height of 330 mm, auto-lock with handle in the corner of top plate, peg board with holes Ø 4 mm, distance between centers holes 25 mm for hooks with wire Ø 3 mm.



Plate Dimensions	1195 x 648 x 41 mm
Slot distance	25 mm
Capacity	225 kg
Net weight	45 kg

**B019/G030**
**HOOK SET**


10 Pcs

Length	30 mm
Pins center distance	25 mm


**Gx**
**HOOKS SET**


10 Pcs

Art.	Pins center distance	Length
G050	30 mm	80 mm
G130	30 mm	155 mm



**P009****WALLCABINET KIT**

With 18 hooks included.



Cabinet dimensions	1200 x 200 x 600h mm
Steel thickness	0,8 mm
Internal shelves	4
Hooks	18 (6 + 6 + 6)
Slot distance	30 mm
Net weight	17 kg

**A100****CABINET**

With 1 drawer, slide on bearing with locking device.



Cabinet dimensions	500 x 460 x 1000h mm
Steel thickness	1 mm
Internal shelves	2
Maximum capacity	100 kg
Shelf capacity	25 kg
Net weight	35 kg

**A300****CABINET**

With 2 drawers, slide on ball bearing with locking device.



Cabinet dimensions	1000 x 460 x 1000h mm
Steel thickness	1 mm
Internal shelves	2
Maximum capacity	150 kg
Shelf capacity	25 kg
Net weight	62 kg

**C800****TOOL CABINET**

With 8 drawers, slide on bearing with locking device, without internal dividers.



Drawer capacity	50 kg
External Dimensions	630 x 550 x 930h mm
Drawer dimensions	517 x 440 mm
Drawers height	8 x 73 mm
Net weight	58 kg



*made in italy*

**C600****TOOL CABINET**

With 6 drawers, slide on bearing with locking device, without internal dividers.



Drawer capacity	50 kg
External Dimensions	630 x 550 x 930h mm
Drawer dimensions	517 x 440 mm
Drawers height	6 x 115 mm
Net weight	53 kg



*made in italy*

**C603****TOOL CABINET**

With 6 drawers, slide on bearing with locking device, without internal dividers.



Drawer capacity	50 kg
External Dimensions	630 x 550 x 930h mm
Drawer dimensions	517 x 440 mm
Drawers height	3 x 73 mm - 2 x 115 mm - 1 x 175 mm
Net weight	53,5 kg



*made in italy*

## C800-

### "A" DRAWER DIVIDERS

Example dividers setting.



10 Pcs

Art.	Longitudinal divider	Transversal divider
C800/CC	440 x 70h mm	-
C800/LL	-	517 x 70h mm



## C600-

### "B" DRAWER DIVIDERS

Example dividers setting.



10 Pcs

Art.	Longitudinal divider	Transversal divider
C600/C	440 x 110h mm	-
C600/L	-	120 x 110h mm



## C603-

### "C" DRAWER DIVIDERS

Example dividers setting.



10 Pcs

Art.	Longitudinal divider	Transversal divider
C603/C	440 x 165h mm	-
C603/L	-	120 x 165h mm



## C080-

### DRAWER UNITS WITH TRANSPARENT PULL-OUT DRAWERS

Modular and stackable



Art.	External Dimensions	Drawer dimensions	Drawers number
C080/3	382 x 290 x 230h mm	372 x 285 x 73h mm	3
C080/6	382 x 290 x 230h mm	184 x 285 x 73h mm	6
C080/9	382 x 290 x 230h mm	122 x 285 x 73h mm	9

## C700

### STEEL STORAGE CHEST WITH PLASTIC CASES

Lower box with key lock and upper zone with 7 tool boxes with central lock 4 x C360 + 3 x C371.



Dimensions	490 x 343 x 987h mm
Net weight	27 kg

## C085-

### DRAWER UNITS WITH TRANSPARENT PULL-OUT DRAWERS

Modular and stackable.



Art.	External Dimensions	Drawer dimensions	Drawers number
C085/12	382 x 148 x 230h mm	122 x 145 x 55h mm	12
C085/16	382 x 148 x 230h mm	90 x 145 x 55h mm	16
C085/24	382 x 148 x 230h mm	59 x 145 x 55h mm	24

**C086/01C****MODULAR DRAWER UNIT WITH PULL-OUT DRAWERS**

Connectable with other drawers through guides to create infinite combinations. Equipped with drawer locking to prevent the contents from accidentally falling and rear fixing holes for wall mounting. Made of resistant plastic, it is suitable for use in the construction site, at home and in the workshop.



Dimensions	295 x 165 x 200h mm
Drawers number	1
Drawer dimensions	250 x 150 x 150 mm

**C086/01T****MODULAR DRAWER UNIT WITH PULL-OUT TRAYS**

Connectable with other drawers through guides to create infinite combinations. Equipped with trays locking to prevent the contents from accidentally falling and rear fixing holes for wall mounting. Made of resistant plastic, it is suitable for use in the construction site, at home and in the workshop.



Dimensions	295 x 165 x 200h mm
Drawers number	1
Drawer dimensions	250 x 160 x 150 mm

**C086/02C****MODULAR DRAWER UNIT WITH PULL-OUT DRAWERS**

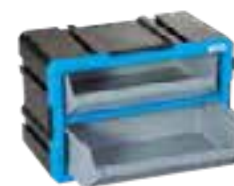
Connectable with other drawers through guides to create infinite combinations. Equipped with drawer locking to prevent the contents from accidentally falling and rear fixing holes for wall mounting. Made of resistant plastic, it is suitable for use in the construction site, at home and in the workshop.



Dimensions	295 x 165 x 200h mm
Drawers number	2
Drawer dimensions	250 x 160 x 70 mm

**C086/02T****MODULAR DRAWER UNIT WITH PULL-OUT TRAYS**

Connectable with other drawers through guides to create infinite combinations. Equipped with trays locking to prevent the contents from accidentally falling and rear fixing holes for wall mounting. Made of resistant plastic, it is suitable for use in the construction site, at home and in the workshop.



Dimensions	295 x 165 x 200h mm
Drawers number	2
Drawer dimensions	250 x 160 x 70 mm

**C086/04C****MODULAR DRAWER UNIT WITH PULL-OUT DRAWERS**

Connectable with other drawers through guides to create infinite combinations. Equipped with drawer locking to prevent the contents from accidentally falling and rear fixing holes for wall mounting. Made of resistant plastic, it is suitable for use in the construction site, at home and in the workshop.



Dimensions	300 x 200 x 165 mm
Drawers number	4
Drawer dimensions	120 x 160 x 70 mm

**C086/04T****MODULAR DRAWER UNIT WITH PULL-OUT TRAYS**

Connectable with other drawers through guides to create infinite combinations. Equipped with trays locking to prevent the contents from accidentally falling and rear fixing holes for wall mounting. Made of resistant plastic, it is suitable for use in the construction site, at home and in the workshop.



Dimensions	295 x 165 x 200h mm
Drawers number	4
Drawer dimensions	120 x 160 x 70 mm

**C086/12C****MODULAR DRAWER UNIT WITH PULL-OUT DRAWERS**

Connectable with other drawers through guides to create infinite combinations. Equipped with drawer locking to prevent the contents from accidentally falling and rear fixing holes for wall mounting. Made of resistant plastic, it is suitable for use in the construction site, at home and in the workshop.



Dimensions	295 x 165 x 200h mm
Drawers number	12
Drawer dimensions	60 x 160 x 50 mm

**C086/04C/D****DIVIDER KIT FOR MODULAR DRAWER UNIT**

4 Pcs

Dimensions	111 x 63 mm
Pack	5

**C086/12C/D****DIVIDER KIT FOR MODULAR DRAWER UNIT**

12 Pcs

Dimensions	49.5 x 41 mm
Pack	5



**C090-**
**UNIVERSAL STORAGE BIN**

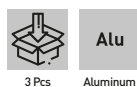
Modular and stackable.



Art.	Dimensions
C090/2	108 x 167 x 75h mm
C090/3	151 x 237 x 126h mm
C090/4	213 x 350 x 164h mm
C090/5	310 x 490 x 190h mm
C090/6	380 x 610 x 250h mm

**0849**
**ALUMINUM CASE SET**

Ergonomic handles and lock with key.



Cases dimensions	730 x 380 x 360h mm - 680 x 310 x 320h mm - 475 x 260 x 210h mm
Net weight	14 kg

**0382-**
**ALUMINUM CASE**

With key lock.



Art.	External Dimensions	Internal dimensions	Net weight
0382	760 x 335 x 250h mm, 1240 x 385 x 385h mm, 1445 x 520 x 460h mm	710 x 285 x 225h mm, 1185 x 335 x 365h mm, 1395 x 435 x 440h mm	40 kg
0382/02	760 x 335 x 250h mm	745 x 310 x 225h mm	6 kg
0382/03	1240 x 385 x 385h mm	1185 x 335 x 365h mm	14 kg
0382/04	1445 x 520 x 460h mm	1405 x 435 x 440h mm	21 kg

**C087**
**TOOL ROLLING CABINET**

Separable into 3 pieces.



Dimensions	560 x 350 x 770h mm
Capacity	40 kg
Net weight	14 kg

**0363-**
**3 PCS STEEL CASE SET**

Padlockable.



Art.	External Dimensions	Internal dimensions	Net weight
0363	770 x 420 x 305h mm, 915 x 440 x 565h mm, 1220 x 620 x 700h mm	750 x 400 x 300h mm, 825 x 350 x 410h mm, 1130 x 520 x 550h mm	107 kg
0363/30	770x420x305h mm	750 x 400 x 300h mm	14,5 kg
0363/36	915 x 440 x 565h mm	825 x 350 x 410h mm	35 kg
0363/48	1220 x 620 x 700h mm	1130 x 520 x 550h mm	57 kg

**C900/B****TOOL ROLLING CABINET**

Side handle, polypropylene foam worktop, 6 drawers with internal oil-resistant mat, mounted on telescopic ball-bearing slides, front central locking supplied with 2 foldable keys, 2 fixed and 2 swivel casters with foot-operated brake, made of shockproof and non-slip thermoplastic rubber.

**UPGRADE****C900/A****TOOL CHEST**

Can be combined with trolley carts. Retractable side handles, 6 drawers, mounted on telescopic ball-bearing slides, removable tray, and front central locking with 2 foldable keys.

**UPGRADE**

Dimensions	661 x 309 x 363h mm
Drawer dimensions	3: 174 x 267 x 45h mm   2: 578 x 267 x 45h mm   1: 578 x 267 x 60h mm
Compartment dimensions	655 x 250 x 80h mm
Drawer capacity	25 kg
Net weight	20 kg

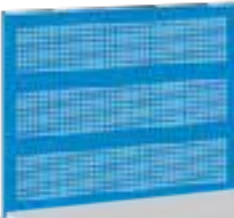
Dimensions	744 x 461 x 964h mm
Drawer dimensions	569 x 406 mm
Drawers height	4 x 45 mm - 1 x 145 mm - 1 x 225 mm
Drawer capacity	25 kg
Net weight	44 kg

# DETAILS MAKE THE DIFFERENCE

We thought about meeting your needs. How? By taking care of the details and the choice of optionals, making the tool rolling cabinet your personal product to work easily and smoothly every day. So, the new FERVI rolling cabinets were born. Simple and easy to set up, thanks to the compliant list of accessories for all different models. Set it up according to your needs. Our goal is to get you the tool rolling cabinet you dream, not just any rolling cabinet!

**C960/PF**
**NEW**

**PERFORATED HANGING PANEL**



Dimensions	678 x 535 x 25h mm
Working table dimensions	678 x 535 mm
Hole diameter	Ø 5 mm
Slot distance	15 mm

**C960/PL**
**NEW**

**LAMINATED WORK TOP**




Plate Dimensions	670 x 454 mm
Plate thickness	9 mm

**C960/MP**
**NEW**

**FOLDING SHELF**



Dimensioni	338 x 261 x 35h mm
Steel thickness	1,50 mm

**C960/PC**
**NEW**

**PAPER ROLL HOLDER**



Dimensions	386 x 167 mm
Hose diameter	15 mm
Max. roll diameter	280 mm

**C960/PD**
**NEW**

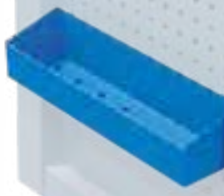
**DOCUMENT HOLDER**



Internal dimensions	270 x 60 x 330h mm
Steel thickness	2 mm

**C960/PG**
**NEW**

**SCREWDRIVER HOLDER**



Dimensions	330 x 76 x 88h mm
Drawer dimensions	328 x 75 x 75h mm
Hole diameter	8 x Ø 8,5 mm



**C960/F6****TOOL ROLLING CABINET WITH 6 DRAWERS**

Side handle, polypropylene foam worktop, steel sheet body with impact protection bumpers and perforated side panels, 6 full-extension drawers with oil-resistant mats, mounted on telescopic ball bearing slides, anti-tip device, side central locking supplied with 2 folding keys, 2 fixed and 2 swivel casters with brakes. Optional accessories: screwdriver holder, document holder, shelf, paper roll holder, rear pegboard and laminated top.

Dimensions	770 x 460 x 985h mm
Drawer dimensions	566 x 405 mm
Drawers height	4 x 68 mm - 1 x 147 mm - 1 x 199 mm
Drawer capacity	5 x 25 kg - 1 x 40 kg
Slot distance	15 mm
Hole diameter	Ø 5 mm
Net weight	55 kg

**C960/F7****TOOL ROLLING CABINET WITH 7 DRAWERS**

Side handle, polypropylene foam worktop, steel sheet body with impact protection bumpers and perforated side panels, 7 full-extension drawers with oil-resistant mats, mounted on telescopic ball bearing slides, anti-tip device, front central locking supplied with 2 folding keys, 2 fixed and 2 swivel casters with brakes. Optional accessories: screwdriver holder, document holder, shelf, paper roll holder, rear pegboard and laminated top.

Dimensions	770 x 460 x 985h mm
Drawer dimensions	566 x 405 mm
Drawers height	6 x 68 mm - 1 x 199 mm
Drawer capacity	6 x 25 kg - 1 x 40 kg
Slot distance	15 mm
Hole diameter	Ø 5 mm
Net weight	58 kg

**C960/F8****TOOL ROLLING CABINET WITH 8 DRAWERS**

Side handle, polypropylene foam worktop, steel sheet body with impact protection bumpers and perforated side panels, 8 full-extension drawers with oil-resistant mats, mounted on telescopic ball bearing slides, anti-tip device, front central locking supplied with 2 folding keys, 2 fixed and 2 swivel casters with brakes. Optional accessories: screwdriver holder, document holder, shelf, paper roll holder, rear pegboard and laminated top.

Dimensions	770 x 460 x 985h mm
Drawer dimensions	566 x 405 mm
Drawers height	7 x 68 mm - 1 x 120 mm
Drawer capacity	25 kg
Slot distance	15 mm
Hole diameter	Ø 5 mm
Net weight	60 kg



## C980

### TOOL ROLLING CABINET

7 drawers, with 2 side storage compartments, ball bearing equipped drawers with central lock, 12 hooks and 10 plastic bins included, 2 swivel and 2 fixed casters.



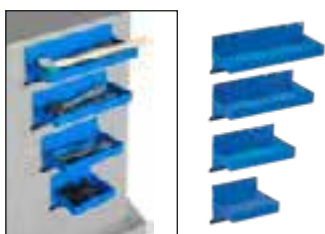
Drawer capacity	25 kg
Tool cabinet size	890 x 530 x 1030h mm
Drawer dimensions	565 x 405 mm
Drawers height	3 x 50 mm - 3 x 105 mm - 1 x 165 mm
Net weight	100 kg



## 0466/4V

### MAGNETIC TOOL TRAY SET

Made of painted steel, to organize the best working place.



Overall dimensions	310 x 130 x 120h mm; 270 x 130 x 120h mm; 210 x 130 x 120h mm; 150 x 130 x 120h mm
Capacity	1,17 kg; 1 kg; 0,77 kg; 0,6 kg
Steel thickness	0,7 mm

## 0466/CV

### MAGNETIC HANGING TRAY WITH SCREWDRIVERS HOLDER

Made of painted steel, to organize the best working place.



Dimensions	360 x 130 x 110h mm
Drawer dimensions	305 x 115 x 30h mm
Holes	6 x Ø 10 mm
Capacity	3.18 kg
Steel thickness	1 mm

## 0466/PB

### MAGNETIC SOCKETS HOLDER

Made of painted steel, to organize the best working place.



Overall dimensions	280 x 45 x 90h mm
Sockets sizes	1/4" - 3/8" - 1/2"
Steel thickness	0,9 mm

## 0466/SC

### 3 HOLE MAGNETIC SPRAY CANS AND 7 SCREWDRIVERS HOLDER

Made of painted steel, to organize the best working place.



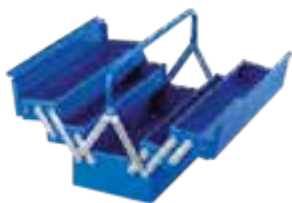
Overall dimensions	130 x 300 x 130h mm
Holes	3 x Ø 75 mm; 2 x Ø 12 mm; 1 x Ø 11 mm; 1 x Ø 10 mm; 1 x Ø 9 mm; 2 x Ø 7,5 mm
Capacity	1,19 kg
Steel thickness	0,8 mm

**0323/45****TOOL CHEST**

With 5 trays.



Steel



Dimensions

450 x 200 x 205 h mm

Net weight

4 kg

**0323/55****TOOL CHEST**

With 5 trays.



Steel



Dimensions

550 x 210 x 205h mm

Net weight

4,5 kg

**0423/1****TOOL BOX**

With 16 small and 4 middle plastic removable trays, ideal for storing small parts. Small plastic trays dimensions: 54 x 52 x 43h mm, middle plastic trays dimensions: 54 x 105 x 43h mm. The box has two safety locks to prevent the involuntary overthrow of the hardware.



Steel

Plastic



Dimensions

334 x 240 x 45 mm

**0423/2****TOOL BOX**

With 29 small and 3 middle removable plastic trays, ideal for storing small parts. Small plastic trays dimensions: 54 x 52 x 43h mm, middle plastic trays dimensions: 54 x 105 x 43h mm. The box has a central safety lock to prevent the overthrow of the hardware.



Steel

Plastic



Dimensions

388 x 295 x 45 mm

**0422-****POLYPROPYLENE BLISTER SET**

Useful for storing small items such as screws, bolts, nuts, small hooks, nails



20 Pcs

Plastic



Art.

Dimensions

0422/B1

65 x 47 x 30 mm

0422/B3

75 x 60 x 40 mm

**C315****TOOL ORGANIZER BOX**

With 21 compartments and movable dividers, for storing larger items than the original magazine.

Plastic



Dimensions

380 x 310 x 60 mm

**C313****RACK WITH 4 PLASTIC TOOL ORGANIZER BOXES**

Modular, with 13 extractable containers of various sizes, equipped with lateral insets for stacking and rear holes for wall fixing.

Plastic



Dimensions

377 x 265 x 310 mm

**C360****TOOL BOX**

With 23 compartments and 16 removable dividers.



Box

Plastic



made in Italy



Dimensions

443 x 317 x 80h mm

**C371**
**TOOL BOX**

With removable 2 big trays, 3 medium trays, 6 small trays.



Box



Plastic



*made in Italy*

Dimensions

443 x 317 x 107h mm

**C165**
**TOOL-BOX**

20", with 1 movable shelf and 2 compartments for motion work in the lid.



Box



Polyprop.



*made in Italy*

Dimensions

514 x 225 x 260h mm

**C163**
**TOOL-BOX**

16", lockable, with 1 movable shelf and 2 compartments for motion work in the lid.



Box



Polyprop.



*made in Italy*

Dimensions

394 x 160 x 195h mm

**C648**
**TOOL BOX**

With movable shelf.



Box



INOX

Dimensions

510 x 280 x 220h mm

**M13x**
**WATERPROOF TOOL CASE**

Built in pressure valve with cubed-foam interior to protect the object stored. It is ideal for instruments and test equipment.



Box



Polyprop.

Art.	External Dimensions	Internal dimensions	Net weight
M138	465 x 360 x 175h mm	425 x 287 x 115h mm	2,9 kg
M139	570 x 410 x 215h mm	505 x 353 x 140h mm	4,5 kg

**M138**

**M139**

**M300/B**
**WATERPROOF TOOL CASE**

Built in pressure valve with cubed-foam interior to protect the object stored. The superior protection from the elements, water, dust and impacts, make it suitable for a wide array of sectors and applications.



Box



Polyprop.



*made in Italy*

External Dimensions	336 x 300 x 148 mm	Working temperature	-30 / 90°C [-22 / 194°F]
Internal dimensions	300 x 225 x 132 mm	Net weight	1,6 kg
Internal volume	8.91 l		

**M430/B**
**WATERPROOF TOOL CASE**

Built in pressure valve with cubed-foam interior to protect the object stored. The superior protection from the elements, water, dust and impacts, make it suitable for a wide array of sectors and applications.



Box



Polyprop.



*made in Italy*

External Dimensions	464 x 366 x 176 mm	Working temperature	-30 / 90°C [-22 / 194°F]
Internal dimensions	426 x 290 x 159 mm	Net weight	2,8 kg
Internal volume	19.64 l		

**M505/B****WATERPROOF TOOL CASE**

Built in pressure valve with cubed-foam interior to protect the object stored. The superior protection from the elements, water, dust and impacts, make it suitable for a wide array of sectors and applications.



Box

PP

Polyprop.



made in Italy

External Dimensions	555 x 428 x 211 mm
Internal dimensions	500 x 350 x 194 mm
Internal volume	33.95 l
Working temperature	-30 / 90°C (-22 / 194°F)
Net weight	3,9 kg

**M540/BT****WATERPROOF TOOL CASE WITH TROLLEY**

Built in pressure valve with cubed-foam interior to protect the object stored. The superior protection from the elements, water, dust and impacts, make it suitable for a wide array of sectors and applications.



Box

PP

Polyprop.



made in Italy

External Dimensions	594 x 473 x 270 mm
Internal dimensions	538 x 405 x 245 mm
Internal volume	53.38 l
Working temperature	-30 / 90°C (-22 / 194°F)
Net weight	5,2 kg

**0682****ABS TOOL CASE**

Tools not included.



Box

ABS

A	460 mm
B	330 mm
C	150 mm
D	98 mm
E	52 mm
Capacity	25 kg
Net weight	2,9 kg

**0683****TROLLEY ABS TOOL CASE**

Tools not included.



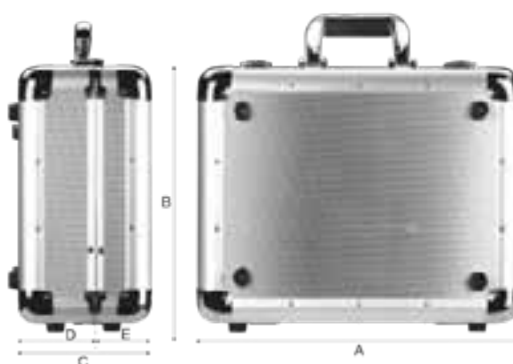
Box

ABS

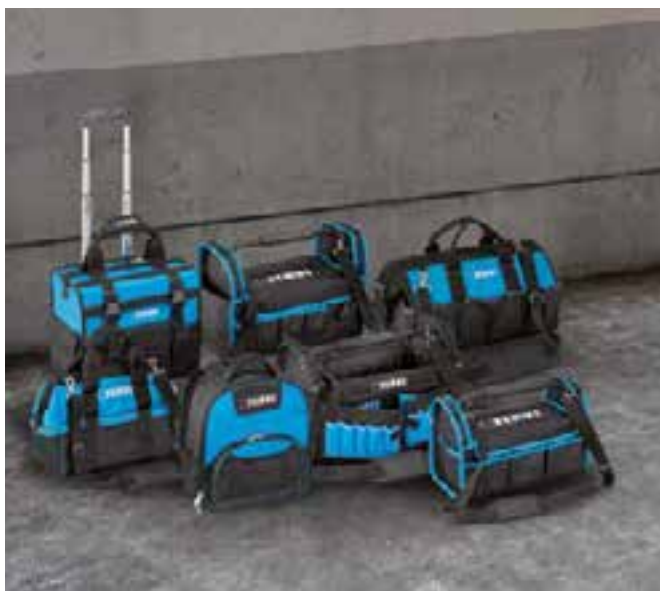
A	460 mm
B	330 mm
C	190 mm
D	98 mm
E	92 mm
Capacity	25 kg
Net weight	4,5 kg

**068x****ALUMINIUM TOOL CASE**

Tools not included.



Art.	A	B	C	D	E	Capacity	Net weight
0680	510 mm	375 mm	185 mm	110 mm	75 mm	30 kg	5 kg
0681	440 mm	390 mm	185 mm	110 mm	75 mm	30 kg	4,8 kg



0901

NEW

### MULTIFUNCTIONAL BACKPACK

Made of 600-denier polyester, with breathable back, removable tool holder, padded computer pocket, roomy and sturdy pockets to accommodate a large number of tools.



Polyester

External Dimensions

380 x 130 x 460 mm

Net weight

1,25 kg

0907

NEW

### SEMI-SOFT TOOL TROLLEY

Tool trolley made of 600-denier polyester, sturdy telescoping handle for excellent handling, convenient front strap opening, multiple roomy and sturdy pockets.



Polyester

Dimensions

390 x 290 x 390 mm

Net weight

3,1 Kg

0902

NEW

### SOFT TOOL BAG

Made of 600-denier polyester, with comfortable shoulder strap, roomy and sturdy pockets to accommodate a large number of tools.



Polyester

Dimensions

370 x 203 x 254 mm

Net weight

1,25 Kg

0903

NEW

### SOFT TOOL BAG

Made of 600-denier polyester, with comfortable shoulder strap, roomy and sturdy pockets to accommodate a large number of tools.



Polyester

Dimensions

450 x 280 x 220 mm

Net weight

2,05 Kg

0904

NEW

### SEMI-SOFT TOOL BAG

Made of 600-denier polyester, with rigid handle for easy handling, comfortable shoulder strap, capacious and sturdy pockets.



Polyester

Dimensions

406 x 203x 254 mm

Net weight

1,3 Kg

**0905****NEW****SEMI-SOFT TOOL BAG**

Made of 600-denier polyester, with rigid handle for easy handling, comfortable shoulder strap, capacious and sturdy pockets.



Polyester

Dimensions 450 x 228 x 280 mm  
Net weight 2,3 Kg

**0906****NEW****SEMI-SOFT TOOL BAG**

Made of 600-denier polyester, with rigid handle for easy handling, comfortable shoulder strap, capacious and sturdy pockets.



Polyester

Dimensions 450 x 228 x 330 mm  
Net weight 1,6 Kg

**0390****TOOL BAG**

With shoulder belt made of 1680 denier polyester, big and rugged pockets to accommodate a great number of tools



Polyester

Pockets 14  
Dimensions 400 x 225 x 250h mm

**0409****TOOL BAG**

10 pockets with belt, made of polyester. It can be used to hold small tester, pliers, scissors, screwdrivers and other tools.



Polyester

Dimensions 250 x 210 x 70 mm

**0254****FITTER TOOL BAG**

Leather with belt.



Pockets 5

**0264****FITTER TOOL BAG**

Leather with belt.



Pockets 11

## 0036-

### STEEL VICE

Lateral sliding adjustment.

UPGRADE



Box Steel



Art.	Jaws	Opening	Working height	Slot distance	Net weight
0036/100	100 mm	105 mm	60 mm	85 mm	4,9 kg
0036/125	125 mm	138 mm	75 mm	110 mm	9,5 kg
0036/150	150 mm	180 mm	90 mm	150 mm	19 kg

## 0036-xG

### TABLE VICE WITH SWIVEL BASE

Lateral sliding adjustment. Equipped with swivel mechanism.

UPGRADE



Box Steel



Art.	Jaws	Opening	Net weight
0036/100G	100 mm	105 mm	5,5 kg
0036/125G	125 mm	124 mm	11 kg
0036/150G	150 mm	180 mm	22 kg

## 0135-

### FORGED STEEL VICE

Lateral sliding adjustment.



Box Steel



Art.	Jaws	Opening	Working height	Slot distance	Net weight
0135/100	100 mm	125 mm	60 mm	98 mm	5,8 kg
0135/125	125 mm	160 mm	70 mm	111 mm	9,8 kg
0135/150	150 mm	190 mm	85 mm	136 mm	17,8 kg

## 0140-

### STEEL VICE

Lateral sliding adjustment. Equipped with hose clamp. Recommended for heavy use.



Box Steel



Art.	Jaws	Opening	Working height	Slot distance	Net weight
0140/080	80 mm	80 mm	60 mm	80 mm	4 kg
0140/100	100 mm	100 mm	65 mm	80 mm	5,5 kg
0140/125	125 mm	125 mm	90 mm	100 mm	10 kg
0140/150	150 mm	150 mm	95 mm	125 mm	14 kg

## 0591-

### STEEL VICE

Lateral sliding adjustment. Equipped with bearing on the screw, hose clamp and interchangeable jaws.



Box Steel



Art.	Jaws	Opening	Net weight
0591/100	100 mm	95 mm	5,3 kg
0591/125	125 mm	130 mm	11 kg

## 0145-

### STEEL VICE

Equipped with hose clamp.



Box Steel



Art.	Jaws	Opening	Working height	Slot distance	Net weight
0145/80	80 x 20 mm	80 mm	58 mm	80 mm	3,7 kg
0145/100	100 x 20 mm	100 mm	70 mm	80 mm	5,2 kg
0145/125	125 x 20 mm	125 mm	75 mm	100 mm	7,4 kg
0145/150	150 x 27 mm	150 mm	95 mm	120 mm	12 kg

## 0174-

### SG IRON BENCH VICE

Equipped with interchangeable jaws.



Box Cast Iron



Art.	Jaws	Opening	Working height	Slot distance	Net weight
0174/100	100 x 20 mm	100 mm	50 mm	85 mm	4,8 kg
0174/125	125 x 22 mm	130 mm	60 mm	95 mm	7,7 kg
0174/150	150 x 22 mm	150 mm	60 mm	105 mm	10 kg

## 0427-

### SG IRON PARALLEL BENCH VICE

Attaches directly to the work base to ensure high stability. Equipped with interchangeable jaws and prismatic guides.



Box Cast Iron



Art.	Jaws	Opening	Net weight
0427/080	80 mm	80 mm	6,5 kg
0427/100	100 mm	100 mm	10 kg
0427/125	135 mm	125 mm	12 kg

**0146/60****STEEL VICE WITH SWIVEL BASE**

Cast Iron

Jaws	60 mm
Opening	60 mm
Clamp capacity	51 mm
Net weight	1,5 kg

**0042-****ALUMINUM MAGNETIC JAW COUPLE**

Ribbed with grooves.



2 Pcs

Alu

Aluminum



Art.	Jaws	Height	Thickness
0042/100	100 mm	28 mm	7.5 mm
0042/125	125 mm	28.5 mm	7.5 mm
0042/150	150 mm	28.5 mm	7.5 mm

**0520-xG****ALUMINIUM MAGNETIC JAW PAIR WITH RUBBER FACE**

With durable rubber.



2 Pcs



Blister

Alu

Aluminum



Art.	Length	Height	Thickness
0520/100G	100 mm	28,7 mm	10,0 mm
0520/125G	125 mm	28,7 mm	10,0 mm
0520/150G	150 mm	28,7 mm	10,0 mm

**0520-xA****ALUMINIUM MAGNETIC JAW PAIR**

Ribbed with grooves.



2 Pcs



Blister

Alu

Aluminum



Art.	Length	Height	Thickness
0520/100A	100 mm	28,3 mm	8,9 mm
0520/125A	125 mm	28,3 mm	8,9 mm
0520/150A	150 mm	28,3 mm	8,9 mm

**0520-xP****PRISMATIC MAGNETIC JAW PAIR**

With trapezoidal jaws.



2 Pcs



Blister

Alu

Aluminum



Art.	Length	Height	Thickness
0520/100P	100 mm	28,5 mm	9,8 mm
0520/125P	125 mm	28,5 mm	9,8 mm
0520/150P	150 mm	28,5 mm	9,8 mm

**0520-xF****MAGNETIC JAW PAIR WITH FIBER FACE**

With strong fiber.



2 Pcs



Blister

Alu

Aluminum



Art.	Length	Height	Thickness
0520/100F	100 mm	28,7 mm	10,3 mm
0520/125F	125 mm	28,7 mm	10,3 mm
0520/150F	150 mm	28,7 mm	10,3 mm

**0520-xS****SERIES OF ALUMINUM MAGNETIC JAW PAIRS**

Includes the items 0520-xA, 0520-xF, 0520-xG, 0520-xP.



8 Pcs



Blister

Alu

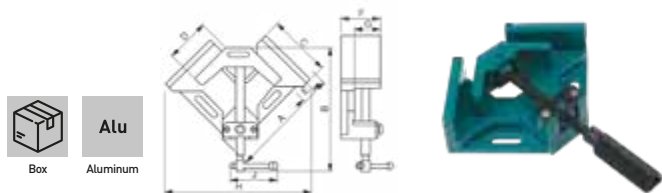
Aluminum

Art.	Length
0520/100S	100 mm
0520/125S	125 mm
0520/150S	150 mm



**0205**
**SPECIAL VICE FOR 90° WELDING**

Adjustable jaw.



Capacity	70 mm + 70 mm
Working height	35 mm
A	150 mm
B	Min 250 mm - Max 345 mm
C	97 mm
D	60 mm
E	70 mm
F	55 mm
G	49 mm
H	217 mm
J	92 mm

**0205/120**
**SPECIAL VICE FOR 90° WELDING**

Adjustable jaw.



Capacity	110 mm + 110 mm
Working height	60 mm
A	257 mm
B	Min 290 mm - Max 458 mm
C	135 mm
D	109 mm
E	126 mm
F	90 mm
G	77 mm
H	340 mm
J	112 mm

**M006-**
**GENERAL USE STEEL CLAMP WITH T-SPINDLE**

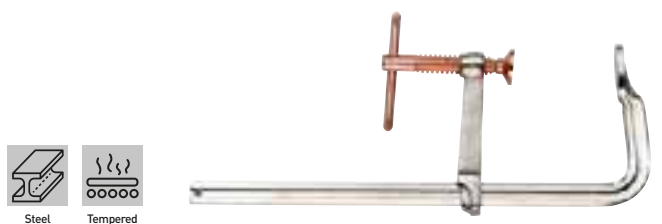

Art.	Span x Depth	Spindle	Maximum torque
M006/200	200 x 120 mm	22 x 10,5 mm	550 kg
M006/300	300 x 140 mm	25 x 12 mm	600 kg
M006/400	420 x 120 mm	25 x 12 mm	650 kg
M006/500	500 x 120 mm	25 x 12 mm	650 kg
M006/600	600 x 120 mm	25 x 12 mm	650 kg
M006/800	800 x 120 mm	25 x 12 mm	650 kg
M006/1000	1000 x 120 mm	25 x 12 mm	650 kg

**M007-**
**GENERAL USE STEEL CLAMP RATCHET**

Quick clamping.



Art.	Span x Depth	Spindle
M007/250	250 x 120 mm	22 x 10,5 mm
M007/300	300 x 140 mm	25 x 12 mm
M007/400	400 x 120 mm	25 x 12 mm
M007/500	500 x 120 mm	25 x 12 mm
M007/600	600 x 120 mm	25 x 12 mm

**M018-**
**GENERAL USE STEEL CLAMP WITH T-SPINDLE**


Art.	Span x Depth	Spindle
M018/0200	200 x 100 mm	19 x 9,5 mm
M018/0300	300 x 100 mm	19 x 9,5 mm
M018/0400	400 x 120 mm	21,5 x 10,5 mm
M018/0500	500 x 120 mm	21,5 x 10,5 mm
M018/0600	600 x 120 mm	21,5 x 10,5 mm
M018/0800	800 x 120 mm	21,5 x 10,5 mm
M018/1000	1000 x 120 mm	21,5 x 10,5 mm
M018/1200	1200 x 120 mm	21,5 x 10,5 mm

**0167-**
**WOOD HANDLE CLAMP**


Art.	Span x Depth
0167/150	150 x 50 mm
0167/200	200 x 80 mm
0167/250	250 x 100 mm
0167/400	400 x 100 mm
0167/500	500 x 120 mm

**0394-****QUICK ADJUSTABLE CLAMP**

ABS

Art.	Span x Depth	Spindle	Maximum torque
0394/150	150 x 63 mm	18 x 5,5 mm	60 kg
0394/300	300 x 63 mm	18 x 5,5 mm	60 kg
0394/450	450 x 63 mm	18 x 5,5 mm	60 kg
0394/600	600 x 63 mm	18 x 5,5 mm	60 kg

**0353/085****POLYPROPYLENE SPRING CLAMPS SET**

Length 85 mm, useful in the laboratory to facilitate the gluings and similar works.



Length	85 mm
Opening	35 mm

**035x****SPRING CLAMP**

Useful in the laboratory to facilitate the gluings and similar works.



Art.	Length	Opening
0353/150	150 mm	55 mm
0354/225	225 mm	100 mm

**0250****4-WAY CLAMPING SYSTEM**

Provided in assembly kit, for doors or wooden tables (wood strips not included).



Plastic

Max thickness	150 mm
---------------	--------

**0353/110****POLYPROPYLENE SPRING CLAMPS SET**

110 mm longs, useful in the laboratory to facilitate the gluings and similar works.



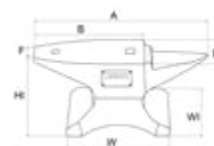
Hangable

Polyprop.

Length	110 mm
Opening	40 mm

**0265/05****CAST IRON ANVIL**

Sturdy construction, round hole and square hole for punching and bending



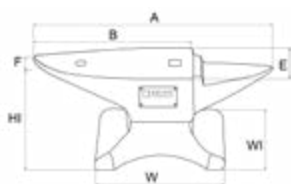
A	230 mm	WI	85 mm
B	160 mm	HI	95 mm
E	57 mm	Tolerance	±5%
F	10,5 mm	Net weight	5 kg
W	112 mm		

**0157-****C50 HARDENED STEEL ANVIL**

Sturdy construction, round hole and square hole for punching and bending.



C50



Art.	A	B	E	W	WI	HI	Tolerance	Net weight
0157/10	345 mm	235 mm	80 mm	150 mm	100 mm	120 mm	±5%	10 kg
0157/30	535 mm	360 mm	110 mm	215 mm	150 mm	160 mm	±5%	30 kg
0157/50	620 mm	410 mm	140 mm	240 mm	175 mm	190 mm	±5%	50 kg
0157/100	805 mm	520 mm	175 mm	315 mm	230 mm	240 mm	±5%	100 kg

# WHAT'S SANDBLASTING?

Sandblasting is an industrial process of surface cleaning that takes place through the mechanical force of the abrasive material pushed by a jet of air. The sand acts by scratching and penetration: the abrasive material mixes with the compressed air jet and works mechanically on the workpiece. This mixture, passing through the nozzle, accelerates. This brings its speed to a level useful to carry out the required abrasive action.



Sandblasting for paint stripping



Sandblasting with glass balls (shot peening)

## TYPES OF SANDBLASTERS

There are 2 types of sandblasters available: vacuum sandblasting cabin and pressure sandblasting cabin. Each has different characteristics based on the use needed by the end user. Sandblasters are equipped with interchangeable nozzles to better adapt them to the material to be treated: on soft materials it is recommended to choose a large nozzle that allows for a high flow rate of the abrasive/air mixture at a low speed. However, for hard materials - or very thick pieces - it is recommended to choose a small nozzle that allows for a higher mixture speed at a lower flow rate.



### VACUUM SANDBLASTING CABIN

Ideal for small/medium sized metal objects to be sandblasted. It exploits the "Venturi principle" which allows sand to be sucked from a container and mixed with compressed air.

- PROS**
- Lower air consumption
  - Lower abrasive wear
  - Reduced maintenance

- CONS**
- Lower processing yields
  - Longer processing times



### PRESSURE SANDBLASTING CABIN

Unlike the vacuum system, the pressure cabin pushes down the air and abrasive, projecting the mixture of these components into a single solution. The jet is thus more powerful and more effective.

- PROS**
- High processing efficiency
  - Reduced processing times
  - Possibility of adjusting the air/abrasive mixture

- CONS**
- Higher air consumption
  - Increased maintenance
  - Higher abrasive wear due to higher jet power

## HOW TO CHOOSE THE ABRASIVE

The choice of abrasive for sandblasters is frequently dictated by experience and ease of use. In fact, Sandblasting with manual machines is a process characterised by many variables at play. Furthermore, in order to achieve an optimal result, the operator must try to find the right balance. Here are 5 good rules for the optimal choice of abrasive:

1) Always use the least aggressive abrasive possible that can do the job required. There is no point in using a very aggressive abrasive and then having to do an additional finishing process. You can always add a harder abrasive. However, undo the work of an overly hard abrasive requires a bigger effort.



2) Glass is shiny, but it also makes surfaces shine: if you need a shiny look, glass microbeads are a great place to start. They are a fantastic finish and will leave your surfaces smooth and shiny.



3) Corundum removes paint: is it necessary to remove paint from an object? With its hard, angular structure and reusability, corundum is the right abrasive. Alternatively you can use Garnet, a natural, environmentally friendly and cheaper abrasive.



4) For fast and aggressive work, use silicon carbide. It is the toughest abrasive on the market. It makes quick work of etching and removing unwanted rust and paint.



5) Steel microspheres are suitable for shot peening, polishing and paint removal. Carefully evaluate because this type of abrasive in contact with the object to be machined changes its mechanical structure. This type of abrasive is suitable for industrial sandblasters.





## SANDERS



Internal dimensions (mm)

0615	1180 x 850 x 890
0605	1180 x 850 x 890
0601	1180 x 850 x 890
0687	1200 x 600 x 600
0878	960 x 480 x 250
0575	850 x 480 x 340
0575S	860 x 560 x 560
0487	685 x 455 x 420
0580	590 x 480 x 290
0580S	560 x 460 x 280
0490	410 x 310 x 200
0462	
0310	

Air consumption (l/min)

0615	880
0605	880
0601	630
0687	630
0878	540
0575	300
0575S	300
0487	300
0580	300
0580S	300
0490	50
0462	420
0310	300

## 0615

### PRESSURE SANDBLAST CABINET

With cyclone vacuum cleaner, HEPA filter, front opening and ceiling light with 3 fluorescent lamps.



Internal dimensions	1180 x 850 x 890 h mm
Maximum capacity	150 kg
Working pressure	6 ÷ 8 Bar
Air consumption	31 SCFM 880 l / min
Gun nozzle	Ø 6 - 7 mm

Electric vacuum	230 V 50 Hz 0.7 kW
Filtration rate	8 micron
With light	Yes
Overall dimensions	1330 x 1515 x 2070 h mm
Net weight	300 kg

## 0605

### PRESSURE SANDBLAST CABINET WITH 2 DUST COLLECTORS

With pressurized tank to have a greater abrasive effect, 2 cyclone-type dust collectors, paper filter, front opening and ceiling light with 3 fluorescent lamps



Working area	1180 x 850 x 890 h mm
Maximum capacity	150 kg
Working pressure	6 ÷ 8 Bar
Air consumption	31 SCFM 880 l / min
Gun nozzle	Ø 6 - 7 mm

Electric vacuum	2 x 230 V 50 Hz 1,2 kW
Filtration rate	5 micron
With light	Yes
Overall dimensions	1800 x 1515 x 2070 h mm
Net weight	245 kg

## 0601

### SANDBLAST CABINET WITH DUST COLLECTOR

Cyclone-type, paper filter, front opening and ceiling light with 3 fluorescent lamps



Working area	1180 x 850 x 890h mm
Maximum capacity	150 kg
Working pressure	6 ÷ 8 Bar
Air consumption	21 SCFM 630 l / min
Gun nozzle	Ø 6 - 7 mm

Electric vacuum	230 V 50 Hz 1.2 kW
Filtration rate	5 micron
With light	Yes
Overall dimensions	1330 x 1240 x 1770 h mm
Net weight	180 kg



0687

**SANDBLAST CABINET WITH VACUUM**

With paper filter.



Working area	1200 x 600 x 600 h mm
Maximum capacity	120 kg
Working pressure	6.5 ÷ 7.5 Bar
Air consumption	21 SCFM 630 l / min
Gun nozzle	Ø 6 - 7 mm
Electric vacuum	230 V 50 Hz 1.2 kW
Filtration rate	5 micron
Overall dimensions	1220 x 910 x 1740 h mm
Net weight	149 kg

0575

**SANDBLAST CABINET**

Working area	850 x 480 x 340 ÷ 540 h mm
Working pressure	6.5 ÷ 7.5 Bar
Air consumption	8 ÷ 10 SCFM (240 ÷ 300 l / min)
Gun nozzle	Ø 4 - 5 - 6 - 7 mm
Overall dimensions	890 x 560 x 1385 h mm
Net weight	46 kg

0878

**SANDBLAST CABINET WITH VACUUM**

With paper filter.



Working area	960 x 480 x 250 ÷ 470 h mm
Working pressure	6.5 ÷ 7.5 bar
Air consumption	18 SCFM 540 l / min
Gun nozzle	Ø 4 - 5 - 6 - 7 mm
Electric vacuum	230 V 50 Hz 1.2 kW
Filtration rate	5 micron
Overall dimensions	1030 x 850 x 1640 h mm
Net weight	100 kg

0575S

**SANDBLAST CABINET**

In kit



Working area	860 x 560 x 560 h mm
Working pressure	6.5 ÷ 7.5 bar
Air consumption	8 ÷ 10 SCFM (240 ÷ 300 l / min)
Gun nozzle	Ø 4 - 5 - 6 - 7 mm
Overall dimensions	905 x 620 x 1390 h mm
Net weight	44 kg

0487

### BENCH SANDBLAST

With provision for the connection of a vacuum cleaner, lighting with low consumption lamp, gun and gloves.



Working area	685 x 455 x 420 mm
Working pressure	6.5 ÷ 7.5 Bar
Air consumption	8 ÷ 10 SCFM (240 ÷ 300 l / min)
Gun nozzle	Ø 4 - 5 - 6 - 7 mm
With light	230 V 50 Hz; 6 W 12 V
Overall dimensions	755 x 495 x 720 h mm
Net weight	26.5 kg

0580S

### BENCH SANDBLAST CABINET

In kit



Overall dimensions	585 x 485 x 495 h mm
Working area	560 x 460 x 280 h mm
Working pressure	6.5 ÷ 7.5 Bar
Air consumption	8 ÷ 10 SCFM (240 ÷ 300 l / min)
Gun nozzle	Ø 4 - 5 - 6 - 7 mm
Net weight	16 kg

0580

### BENCH SANDBLAST CABINET

With provision for the connection of a vacuum cleaner, lighting with low consumption lamp, gun and gloves.



Overall dimensions	630 x 510 x 490 h mm
Working area	590 x 480 x 290 h mm
Working pressure	6.5 ÷ 7.5 Bar
Air consumption	8 ÷ 10 SCFM (240 ÷ 300 l / min)
Gun nozzle	Ø 4 - 5 - 6 - 7 mm
Net weight	13 kg

0490

### MINI BENCH SANDBLAST

With foot control and fixed gun.



Working area	410 x 310 x 200 h mm
Working pressure	4 - 7.5 bar
Gun nozzle	Ø 3.5 mm
With light	50 Hz, 6 W 12 V
Overall dimensions	475 x 370 x 370 h mm
Net weight	12 kg
Internal volume	32 L
Opening size	420 x 260 mm

**0462****SANDBLAST MACHINE WITH VACUUM**

For rusted metallic objects that can't be put in traditional sandblast machine. if the object to be considered is flat, the vacuum cleaner allows the operator to not lose the most part of the abrasive material that is being used. the four wheels, two of which swivel, allow the operator that the machine is close to the object to be sandblasted

Tubes length	2.5 m
Motor	230 V 50 Hz 1.2 kW
Max vacuum capacity	13 ÷ 15 kPa
Working pressure	8 Bar
Air consumption	420 l / min
Dimensions	404 x 612 x 1046 h mm
Net weight	30 kg

**0310****SODA BLASTER**

For external use, light weight, easy to carry, indicated for the removal of paints, rust, graffiti etc ..

Overall dimensions	350 x 400 x 788 h mm
Capacity	18 l
Working pressure	2.5 ÷ 6.2 bar
Air consumption	8 ÷ 10 SCFM (240 ÷ 300 l / min)
Gun nozzle	Ø 2 - 3 mm
Net weight	13 kg

**SA01-CTRx****ROTARY TABLE FOR SANDBLAST CABINET**

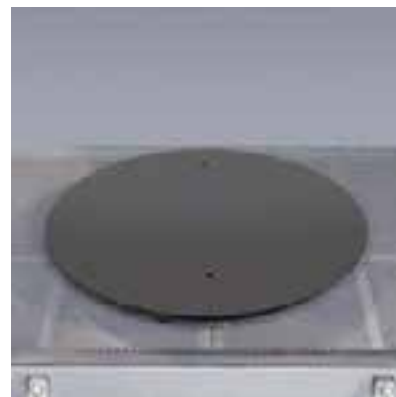
With trolley.



Art.	Capacity	Diameter	Overall dimensions	Net weight
SA01/CTR1	150 kg	580 mm	920 x 580 x 1070h mm	43,5 kg
SA01/CTR2	150 kg	580 mm	920 x 580 x 1335h mm	45 kg

**SA01/TR****ROTARY TABLE**

For sandblast cabinet.



Diameter	380 mm
Overall dimensions	380 x 43h mm
Net weight	7 kg

**SA01/C****CYCLONE FOR SAND BLAST CABINET**

In two stage.



Filtration rate	8 micron
Air flow	13500 l/min
Max power	230 V 50 Hz 0,55 kW
Overall dimensions	540 x 1000 x 1450h mm
Net weight	55 kg

**SA01/A****SANDBLAST CYCLON**

Cylindrical with paper filter, with manual filter beater and opening in the lower part.

Electric vacuum	230 V 50 Hz 1,2 kW
Filtration rate	5 micron
Air permeability	185 l/(m²s)
Inlet size	Ø 55 mm
Slot distance	305 X 240 mm
Dimensions	Ø 290 X 730 mm



## 0582-

### SANDBLAST CORUNDUM

It stands out for being edgy and extremely stable by combining the properties of hardness and density. Its longevity and reusability make it the most used material for sandblasting. Being composed for the most part of aluminum oxide it is practically free of iron. Particularly suitable for cleaning metal surfaces, removing rust and oxide layers and removing temper colors.



Art.	Grit	Hardness	Net weight
0582/36	36	9 Mohs	25 kg
0582/80	80	9 Mohs	25 kg

## 0578-

### SILICON CARBIDE

Black Silicon Carbide is the hardest material used for sandblasting, making it the ideal solution for all the most demanding jobs. Virtually iron-free, its abrasive properties make it very aggressive and fast in removing impurities. Its conformation allows the grains to break continuously creating new sharp and cutting edges, increasing the fineness of the grain size. Very durable it allows a high reusability. It tends to be incorporated into the material.



Art.	Grit	Hardness	Net weight
0578/36	36	9.1 Mohs	25 kg
0578/80	80	9.1 Mohs	25 kg

## 0579-

### GARNET

Garnet is one of the last natural abrasives still in use. It is a natural stone, and therefore ecological, with excellent abrasive properties that allows you to create profiles without abrasive incorporation, produce little dust and have a relatively low consumption. It is excellent for removing hard coatings, paint, rust and laminate scales. It can be used for both dry and water sandblasting. Its low cost makes it an alternative to corundum.

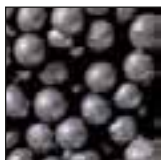


Art.	Grit	Hardness	Net weight
0579/30	36 ÷ 60	7.5 Mohs	25 kg
0579/80	80	7.5 Mohs	25 kg

## 0569

### STEEL SHOT

Thanks to their spherical surface and hardness they allow to obtain shiny surfaces. Excellent for removing paint, blemishes, burrs and rust. Their low crushing does not create dust inside the sandblasting cabin and allows a long life of the abrasive. They can be used both as a means for shot peening and for both dry and water sandblasting.



Grit	S390
Hardness	40 ÷ 50 HRC
Net weight	25 kg

## 0581

### MICRO GLASS BEADS

Thanks to their spherical shape they are perfect for surface finishing. They create smooth and bright surfaces, leaving an incomparable satin effect. As they do not contain iron, they are very suitable for working on stainless steel for food use and aluminum. The microspheres will not damage the substrate of the material being processed but will leave an anchoring profile for subsequent painting, especially on soft materials such as brass, aluminum, plastics, etc...



Grit	50 ÷ 70 (0,3 ÷ 0,2 mm)
Hardness	5-7 Mohs
Net weight	25 kg

## 0310B

### SODA BLASTING MEDIA

Salt composed basic bicarbonate synthetic, suitable for treating steel, aluminum, fiberglass, plastic, bricks etc ...



Grit	36 ÷ 80 (0,5 ÷ 0,3 mm)
Hardness	2,5 - 3 Mohs
Decomposition temperature	> 50°C
Net weight	25 kg

**0490/11****PAIR OF GLOVES**

Gloves diameter

100 mm

**0490/03****WINDOW PROTECTION SET**

For sandblasters.



5 Pcs

**0601/30****LAMP PROTECTION SET**

For sandblasters, 900 x 260 mm.



5 Pcs

Size

900 x 260 mm

**0575/04****WINDOW PROTECTION SET**

For sandblasters, 550 x 250 mm.



10 Pcs

Size

550 x 250 mm

**SA01/F****CYCLONE FILTER**

HEPA material.



Diameter

320 mm

Height

600 mm

**05x****PAIR OF GLOVES**

Soft and comfortable.



Art.	Length	Gloves diameter
0575/29	600 mm	180 mm
0580/21	450 mm	145 mm

**0601/24****WINDOW PROTECTION SET**

For sandblasters, 670 x 300 mm.



5 Pcs

Size

670 x 300 mm

**0687/005****LAMP PROTECTION SET**

For sandblasters, 600 x 100 mm.



10 Pcs

Size

600 x 100 mm

**0580/01-6****WINDOW PROTECTION SET**

For sandblasters, 400 x 300 mm.



5 Pcs

Size

400 x 300 mm

**0687/029****SANDBLAST CYCLON**

Diameter

170 mm

Height

305 mm

0687/041

**SANDBLAST GUN**

For sandblaster 0687.



0290

**SANDBLAST GUN**

Metal gun, with ceramic nozzles.



Ceramic nozzles	Ø 4 - 5 - 6 - 7 mm
Rubber hose length	1,5 m
Air inlet	G 1/4"
Sound pressure level	< 70 dB(A)
Vibrations	< 2.5 m/s <sup>2</sup>
Working pressure	0.6 MPa

0577/17

**FIXED GUN**


U003

**BORON CARBIDE NOZZLE**

For sand blast cabinet, long life.



Nozzle diameter

Ø 7,5 mm

U004

**COMPOSITE NOZZLE**

For sand blast cabinet, long life.



Nozzle diameter

6 mm

0490/20

**CERAMIC NOZZLE SET**


4 Pcs



Nozzle diameter

Ø 3,5 mm

0462/55

**CERAMIC NOZZLE SET**


5 Pcs



Nozzle diameter

Ø 7,5 mm

0575/0580/12

**CERAMIC NOZZLE SET**

4 pcs, diameter Ø 4,5,6,7 mm.



4 Pcs



Nozzle diameter

Ø 4 - 5 - 6 - 7 mm

0687/102

**CERAMIC NOZZLE SET**


4 Pcs



Nozzle diameter

Ø 6 - 7 mm

**0305****PART WASHER WITH HEATING SYSTEM**

For washing with hot water up to 60° C, with a Venturium pneumatic gun.



Tank capacity	8 ÷ 14 l
Avg air cons.	5 SCFM 145 l / min
Working area	760 x 560 x 380 mm
Washing pressure	5 ÷ 8 Bar
Power	1350 W
Dimensions	790 x 610 x 1260 h mm
Net weight	49 kg

**0486****PARTS WASHER WITH DUAL PUMP**

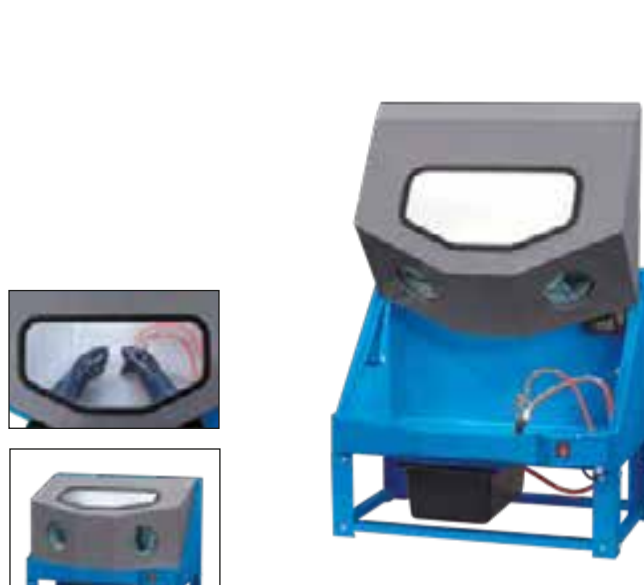
150 l capacity, with 26 W pump, cleaning brush and hose, workpiece tray.



Left tank internal dimensions	470 x 520 x 270 mm
Right tank internal dimensions	590 x 520 x 270 mm
Tub capacity	150 l
Pump	230V 50Hz 26 + 26 W
Pump capacity	10 ÷ 12 l/min
Size	1140 x 550 x 880 h mm
Net weight	43 kg

**0203****BENCH PART WASHER**

For washing with water/solvent, with a Venturium pneumatic gun.



Dimensions	770 x 595 x 700h mm
Tank capacity	4 ÷ 9 l
Avg air cons.	5 SCFM 145 l / min
Working area	765 x 560 x 380 mm
Power	30 W
Washing pressure	5 ÷ 8 Bar
Power	230 V 50 Hz
Net weight	32 kg

**0038****DEGREASER CLEANING TANK**

75 l capacity, with 26 W pump, cleaning brush and hose, workpiece tray.



Internal tank dimensions	710 x 480 x 260h mm
Tub capacity	75 l
Pump	230 V 50 Hz 26 W
Pump capacity	10÷12 l / min
Dimensions	775 x 540 x 880 h mm
Net weight	25 kg

0232

**DEGREASER CLEANING TANK WITH WHEEL**


Internal tank dimensions	710 x 480 x 200 h mm
Tub capacity	60 l
Pump	230 V 50 Hz 26 W
Pump capacity	10 ÷ 12 l / min
Dimensions	970 x 540 x 930 h mm
Net weight	35 kg

0392

**BENCH MICRO CLEANER**

For wall mounting.



Capacity	14 l
Neon light	24 V 8 W
Pump	230 V 50 Hz 26 W
Pump capacity	10 ÷ 12 l / min
Dimensions	560 x 545 x 635 h mm
Net weight	25 kg

0233

**MOBILE PARTS WASHER**

Made of ABS with rubber seals in NBR.



Internal tank dimensions	460 x 660 x 260 mm
Capacity	9 l
Pump	230 V 50 Hz 16 W

0632

**DEGREASER CLEANING PNEUMATIC TANK**


Internal tank dimensions	710 x 480 x 200 h mm
Height	1015 mm
Tank capacity	50 l
Tub capacity	65 l
Power pressure	6 Bar
Maximum tank pressure	0.5 Bar
Net weight	38 kg

0211

**TEAR-DOWN WORKBENCH WITH FLUID RECOVERY**

Provided in assembly kit, with one drawer equipped with lock, removable bowl and pivoting wheels, 2 with safety brake.



Dimensions	1200 x 640 x 872h mm
Working table dimensions	1190 x 635 x 15h mm
Drawer dimensions	420 x 340 x 120h mm
Internal tank dimensions	360 x 260 x 115h mm
Internal shelf height	445 mm
Maximum capacity with wheels	280 kg
Maximum capacity without wheels	350 kg
Net weight	64 kg

0632/01

**PARTS WASHER BRUSH**

Not suitable for hydrocarbon based products.



Length	280 mm
Diameter	35 mm
Shank	20 mm x Ø10 mm

0305/0203/1118

**PAIR OF GLOVES FOR PARTS WASHERS**

Not suitable for hydrocarbon based products.



Length	540 mm
--------	--------

**UC01-****NEW****ULTRASONIC CLEANER**

The ultrasonic cleaning tank is ideal for deep cleaning of spare parts, metal spare parts in general, mechanical / electronic components and tools. Thanks to the LCD controls it is easy to adjust time and temperature. For general cleaning, the use of water is sufficient; for a deeper cleaning use specific detergents. The tank, entirely made of stainless steel, is hygienic and easy to clean. Internal cleaning basket included.



Art.	Power	Ultrasonic power	Heating power	Capacity Liters	Emptying mode	Washing time adjustment	Temperature	External Dimensions	Compartment dimensions	Net weight
UC01/20	230V 50Hz	60 W	100 W	2 L	Manual	0 - 99 min	0C° - 80C°	190 x 170 x 195 mm	150 x 140 x 100 mm	2,1 Kg
UC01/32	230V 50Hz	120 W	100 W	3,2 L	Manual	0 - 99 min	0C° - 80C°	270 x 170 x 220 mm	240 x 140 x 100 mm	3,2 Kg
UC01/65	230V 50Hz	180 W	300 W	6,5 L	Drain Tap	0 - 99 min	0C° - 80C°	330 x 180 x 280 mm	300 x 155 x 150 mm	5,2 Kg
UC01/100	230V 50Hz	240 W	300 W	10 L	Drain Tap	0 - 99 min	0C° - 80C°	330 x 270 x 280 mm	300 x 240 x 150 mm	6,55 Kg
UC01/150	230V 50Hz	360 W	400 W	15 L	Drain Tap	0 - 99 min	0C° - 80C°	360 x 330 x 280 mm	330 x 300 x 150 mm	8,3 Kg

**0632-****DETERGENT LIQUID**

Art.	Contents	Specification
0632/D	25 l	Solvent base
0632/DA	25 l	Water dilutable max. 50%
0632/DCF	25 l	Water dilutable max. 20%, hot usage

**0632/DCF05****NEW****DETERGENT LIQUID**

Contents	5 l
Specification	Water dilutable max. 20%, hot or ultrasonic usage



### A024/10

#### WET AND DRY VACUUM CLEANER

With ABS tank, blower function, equipped with accessories.



Power	1,2 kW
Capacity	10 l
Motor	230 V 50 Hz
Air flow	30 ± 2 l/s
Net weight	3,7 kg

### A025/30

#### WET AND DRY VACUUM CLEANER

With stainless steel tank, blower function, equipped with accessories.



Power	1,2 kW
Capacity	30 l
Motor	230 V 50 Hz
Air flow	28 l / s
Net weight	6 kg

### A040/30A

#### INDUSTRIAL WET AND DRY VACUUM CLEANER EQUIPPED OF ACCESSORIES

For industrial use, with socket for electronic devices.



Power	1,4 kW
Capacity	30 l
Motors	1 (230 V 50 Hz)
Air flow	35 l / s
Power socket	1600 W
Net weight	7,5 kg

### A040/60A

#### INDUSTRIAL WET AND DRY VACUUM CLEANER EQUIPPED OF ACCESSORIES

For industrial use, with socket for electronic devices.



Power	1,4 kW
Capacity	60 l
Motors	1 (230 V 50 Hz)
Air flow	46 l / s
Power socket	1600 W
Net weight	13 kg

**A024/602****60L 2 MOTORS WET AND DRY VACUUM CLEANER**

With ABS tank, equipped with accessories.



Power	2,8 kW
Capacity	60 l
Motors	2 (230 V 50 Hz)
Air flow	30 ±2 l/s
Net weight	12,5 kg

**A040/802****80L 2 MOTORS INDUSTRIAL WET AND DRY VACUUM CLEANER**

For industrial use, equipped with accessories.



Power	2 kW
Capacity	80 l
Motors	2 (230 V 50 Hz)
Air flow	75 l / s
Dimensions	600 x 580 x 950 mm
Net weight	25 kg

**A040/803****80L 3 MOTORS INDUSTRIAL WET AND DRY VACUUM CLEANER**

For industrial use, equipped of accessories.



Power	3 kW
Capacity	80 l
Motors	3 (230 V 50 Hz)
Air flow	96 l / s
Dimensions	600 x 580 x 950 mm
Net weight	28 kg



**ACAS/001**

**INLET SPONGE FILTER  
SET FOR VACUUM  
CLEANER**


**ACAS/002**

**HEPA FILTER FOR  
VACUUM CLEANER**


**ACAS/003**

**FLEXIBLE HOSE FOR  
VACUUM CLEANER**



Spare parts 1.5 m hose

**ACAS/004**

**METAL EXTENSION PIPE  
FOR VACUUM CLEANER**


**ACAS/005**

**PAIR OF PLASTIC TUBES  
FOR VACUUM CLEANER**


**ACAS/006**

**INLET SPONGE FILTER  
SET FOR VACUUM  
CLEANER**


**ACAS/007**

**FILTER FOR VACUUM  
CLEANER**


**ACAS/008**

**PAPER BAG SET FOR  
VACUUM CLEANER**


**ACAS/009**

**FLEXIBLE HOSE FOR  
VACUUM CLEANER**


**ACAS/010**

**BIG BRUSH FOR VACUUM  
CLEANER**


**ACAS/011**

**MULTI FUNCTION BRUSH  
FOR VACUUM CLEANER**


**ACAS/012**

**PAPER BAG SET FOR  
VACUUM CLEANER**


**ACAS/013**

**BAG SET**

In paper for vacuum cleaner.


**ACAS/014**

**PLASTIC TUBE SET**

For vacuum cleaner


**ACAS/015**

**SMALL BRUSH**

For vacuum cleaner.


**ACAS/017**

**INLET SPONGE FILTER  
SET**

For vacuum cleaner.


**A040/8037**

**FLEXIBLE HOSE FOR  
VACUUM CLEANER**


**A040/8040**

**PAIR OF METAL TUBES  
FOR VACUUM CLEANER**



Letter F  
Spare parts Couple of metal pipe

**A040/8047U**

**WET BRUSH FOR  
VACUUM CLEANER**


**A040/8047S**

**DRY BRUSH FOR VACUUM  
CLEANERS**


**A040/8029**

**FILTER FOR VACUUM  
CLEANER**


**A040/8046**

**SHORT TIP FOR VACUUM  
CLEANER**


**A040/8048**

**ROUND BRUSH FOR  
VACUUM CLEANER**



Letter D  
Spare parts Straight nozzle

**M041****PORTABLE PNEUMATIC DOT MARKING MACHINE**

With touch screen computer.



Working area	110 x 40 mm
Working speed	3 - 5 Characters / sec
Workpiece allowed hardness	≤ HRC62
Net weight	12 kg

**M040****PNEUMATIC DOT MARKING MACHINE**

Usb port, windows xp and windows 7 32 bit software.



Working area	110 x 80 mm
Working speed	30 - 40 mm / sec
Table dimensions	320 x 300 mm
Workpiece allowed hardness	≤ HRC62
Net weight	60 kg

**M040/CF****WIRE CONTROL FOR DOT MARKING MACHINE****M040/CP****FOOT CONTROL FOR DOT MARKING MACHINE****M040/D****DIVIDER FOR DOT MARKING MACHINE****M040/SA****SHAFTS SUPPORT FOR DOT MARKING MACHINE****M040/SP****SUPPORT FOR PLATES FOR DOT MARKING MACHINE****M040/ST****TUBE SUPPORT FOR DOT MARKING MACHINE**

## P012-L

### HRC 58-60 LETTERS



Art.	Punch dimensions	Shank dimensions
P012/L03	3 mm	6 x 6 x 60h mm
P012/L04	4 mm	7 x 7 x 61h mm
P012/L05	5 mm	7,5 x 7,5 x 61h mm
P012/L06	6 mm	8,8 x 8,8 x 63h mm
P012/L08	8 mm	10 x 10 x 66h mm

## P012-LxP

### HRC 58-60 LETTERS

Micro stress.



Art.	Punch dimensions	Shank dimensions
P012/L03P	3 mm	7 x 7 x 61h mm
P012/L04P	4 mm	7,5 x 7,5 x 61h mm
P012/L05P	5 mm	8,8 x 8,8 x 63h mm
P012/L06P	6 mm	10 x 10 x 66h mm
P012/L08P	8 mm	12 x 12 x 70h mm

## P012-N

### NUMBERS HRC 58-60



Art.	Punch dimensions	Shank dimensions
P012/N03	3 mm	6 x 6 x 60h mm
P012/N04	4 mm	7 x 7 x 61h mm
P012/N05	5 mm	7,5 x 7,5 x 61h mm
P012/N06	6 mm	8,8 x 8,8 x 63h mm
P012/N08	8 mm	10 x 10 x 66h mm

## P012-NxP

### NUMBERS HRC 58-60

Micro stress.



Art.	Punch dimensions	Shank dimensions
P012/N03P	3 mm	7 x 7 x 61h mm
P012/N04P	4 mm	7,5 x 7,5 x 61h mm
P012/N05P	5 mm	8,8 x 8,8 x 63h mm
P012/N06P	6 mm	10 x 10 x 66h mm
P012/N08P	8 mm	12 x 12 x 70h mm

## P021

### ELECTRIC ENGRAVER

On battery, with 2 diamond tip Ø 2.35 mm, light weight easy to use, suitable for engraving glass, ceramic, plastic, wood, inox, brass, aluminum, soft steel.



Speed	20000 rpm
Length	160 mm
Not included batteries	2 x 1,5 V AAA

## P002

### ENGINEER'S SCRIBER WITH METAL BODY AND HARD-METAL POINT



Length	153 mm
--------	--------

## P005

### STEEL ENGINEER'S SCRIBER



Length	270 mm
--------	--------

**P039****ENGINEER' S SCRIBER**

With metal body and hard-metal point.



Telescopic  
Length

150 mm

**P039/PR****SET HARD-METAL POINT**

2 Pcs



Length

40 mm

**P020****ELECTRIC VIBRATING ENGRAVER**

With vibration adjustment, suitable for engraving glass, ceramic, plastic, wood, inox, brass, aluminum, soft steel.



Vibrations  
Power

7200 / min  
230 V 50 Hz 13 W

**P020/P****SPARE PART BIT SET**

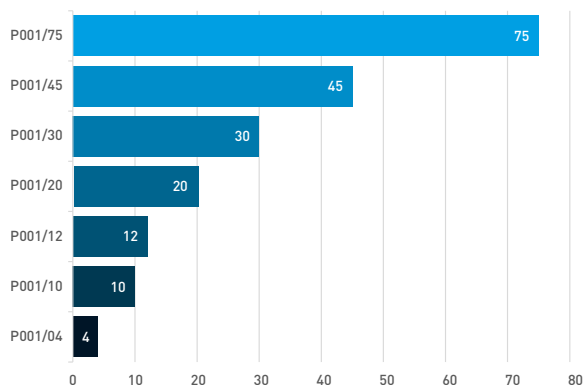
2 Pcs



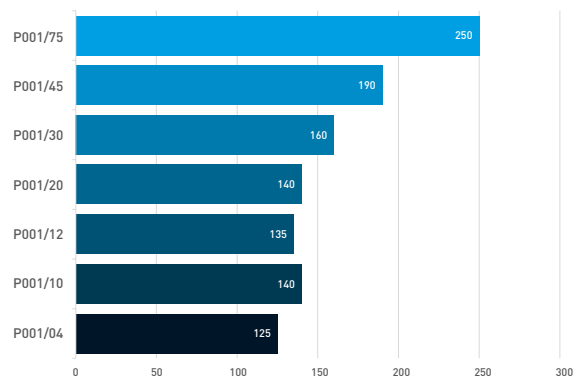
## PRESSES



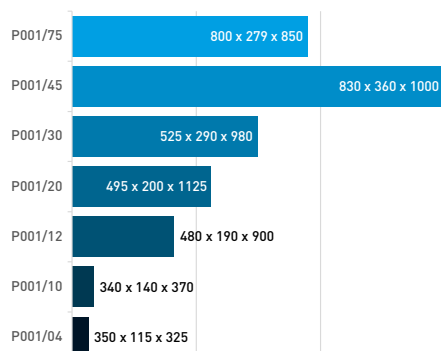
Capacity (Ton)



Ram stroke (mm)



Working area



**P001/75**
**PNEUMATIC HYDRAULIC SHOP PRESS**

Equipped with wheeled mobile piston, with winch for bench movement, two-speed manual control and pneumatic servopump with foot control



Capacity	75000 kg
Working area	800 x 279 x 850 h mm
Ram Ø	125 mm
Ram Ø	78 mm
Ram stroke	250 mm
Working pressure	0,75 ÷ 0,85 MPa
Dimensions	1140 x 800 x 1896 h mm
Net weight	460 kg


**P001/45**
**HYDRAULIC SHOP PRESS WITH MANUAL PNEUMATIC CONTROL**

With manual winch for bench handling, equipped with manual control and pneumatic servo pump with hand control.



Capacity	45000 kg
Working area	830 x 360 x 1000 h mm
Cylinder Ø	90 mm
Ram Ø	58 mm
Ram stroke	190 mm
Working pressure	7÷ 8 Bar
Max. pressure	63,5 MPa
Dimensions	1400 x 800 x 1700 h mm
Net weight	330 kg


**P001/30**
**HYDRAULIC SHOP PRESS**

With two speed pump and movable piston.



Capacity	30000 kg
Working area	525 x 290 x 980h mm
Cylinder Ø	92 mm
Ram Ø	56 mm
Ram stroke	160 mm
Max. pressure	69 MPa
Dimensions	875 x 700 x 1780 h mm
Net weight	145 kg



**P001/20**
**HYDRAULIC SHOP PRESS**

With moveable piston.



Capacity	20000 kg
Working area	495 x 200 x 1125 h mm
Cylinder Ø	75 mm
Ram Ø	48 mm
Ram stroke	140 mm
Max. pressure	69.3 MPa
Dimensions	690 x 600 x 1830 h mm
Net weight	94 kg


**P001/12**
**HYDRAULIC SHOP PRESS**

With movable piston.



Capacity	12000 kg
Working area	480 x 190 x 900 h mm
Cylinder Ø	56 mm
Ram Ø	38 mm
Ram stroke	135 mm
Max. pressure	69 MPa
Dimensions	730 x 550 x 1600 h mm
Net weight	60 kg


**P001/10**
**HYDRAULIC SHOP PRESS**

With bench and movable piston.



Capacity	10000 kg
Working area	340 x 140 x 370 h mm
Cylinder Ø	56 mm
Ram Ø	38 mm
Ram stroke	130 mm
Max. pressure	69 MPa
Dimensions	565 x 500 x 1040 h mm
Net weight	52 kg


**P001/04**
**HYDRAULIC SHOP PRESS**

Counter top, 4 ton, for brearings.



Capacity	4000 kg
Working area	350 x 115 x 325 h mm
Cylinder Ø	40 mm
Ram Ø	25 mm
Ram stroke	125 mm
Max. pressure	51 MPa
Dimensions	450 x 400 x 655 h mm
Net weight	30 kg



**P022-****RATCHET ARBOR PRESS**

With removeable revolving table.



Art.	Capacity	Max height piece	Max Ø piece	Arbor size	Net weight
P022/05	5000 N	90 mm	160 mm	19 x 19 mm	8 kg
P022/10	10000 N	100 mm	180 mm	25 x 25 mm	12 kg
P022/20	20000 N	170 mm	260 mm	30 x 30 mm	27 kg

**P029-****RATCHET ARBOR PRESS**

With removeable revolving table.



Art.	Capacity	Dimensions	Max height piece	Max ø piece	Arbor size	Net weight
P029/2	15000 N	390 x 160 x 720h mm	190 mm	180 mm	30 x 30 mm foro 10 mm	42 kg
P029/3	25000 N	450 x 200 x 870h mm	290 mm	250 mm	37,5 x 37,5 mm foro 13.80 mm	60 kg

**P028-****HAND PUNCH**

With spring loaded return.



Art.	Capacity	Dimensions	Max height piece	Max ø piece	Spindle travel	Net weight
P028/07	1500 N	240 x 155 x 335h mm	230 mm	150 mm	50 mm	8,5 kg
P028/14	2000 N	280 x 170 x 760h mm	275 mm	180 mm	70 mm	18 kg

**0485****SHOP PRESS PIN SET**

8 Pcs

Pins head size	24,7 mm
----------------	---------

**0054/10**
**HYDRAULIC BODY FRAME REPAIR KIT**


Capacity	10 ton
Ram length	330 mm
Ram stroke	130 mm
Net weight	30 kg

**0054/4**
**HYDRAULIC BODY FRAME REPAIR KIT**


Capacity	4 ton
Ram length	270 mm
Ram stroke	120 mm
Net weight	19 kg

**0664**
**HYDRAULIC PUMP WITH PNEUMATIC PEDAL CONTROL**

Useful for shop press, trolley jacks and rams.



Rated pressure	70 MPa
Working pressure	7 ÷ 8 bar
Usable oil capacity	690 ml
Air consumption	10 SCFM
Net weight	8 kg

**0271**
**HYDRAULIC PUMP**

With pump activation pedal.



Rated pressure	63,7 MPa
Usable oil capacity	790 ml
Hose length	1500 mm
Net weight	7 kg

**0663**
**PULL BACK RAM**


Capacity	5 ton
Length Closed	560 mm
Length Open	690 mm
Spindle	ø 33 mm
Swing	130 mm
Net weight	5,5 kg



0567

### LOW PROFILE HYDRAULIC TROLLEY JACK

2 tons, made of steel.



Capacity	2 ton
Lifting	90 ÷ 385 mm
Dimensions	580 x 165 x 235 h mm
Net weight	13 kg

0457

### LOW PROFILE JACK

2 tons, made of steel, with round handle.



Capacity	2 ton
Lifting	70 ÷ 500 mm
Dimensions	785 x 350 x 152 mm
Net weight	41 kg

0369

### HYDRAULIC TROLLEY JACK

Dual pump, with removeable saddle and rubber pad.



Capacity	3,5 ton
Dimensions	745 x 335 x 180 mm
Lifting	110 ÷ 560 mm
Net weight	46 kg

0375A

### LOW PROFILE HYDRAULIC TROLLEY JACK

2,5 ton, double pump quick lift, with load limiter.



Capacity	2.5 ton
Lifting	75 ÷ 500 mm
Dimensions	680 x 345 x 220 h mm
Net weight	32,5 kg

0065A

### HYDRAULIC TROLLEY JACK

With removable saddle.



Capacity	3 ton
Dimensions	660 x 345 x 260 mm
Lifting	140 ÷ 515 mm
Net weight	33 kg

C038/30

### HYDRAULIC TROLLEY JACK



Capacity	3 ton
Dimensions	572 x 328 x 175h mm
Lifting	130 ÷ 465 mm
Net weight	28 kg



**0060****HYDRAULIC TROLLEY JACK**

Metal body frame. Handle for hand carrying. Extendable lever.



Capacity	2 ton
Dimensions	535 x 225 x 145 mm
Lifting	135 ÷ 385 mm
Net weight	11 kg

**C039/25****HYDRAULIC TROLLEY JACK**

Aluminium and steel hydraulic trolley jack with double pump.



Capacity	2.5 ton
Dimensions	659 x 289 x 165 h mm
Lifting	110 ÷ 460 mm
Net weight	27 kg

**C039/15****HYDRAULIC TROLLEY JACK**

Aluminium and steel hydraulic trolley jack with double pump.



Capacity	1,5 ton
Dimensions	490 x 270 x 130 h mm
Lifting	90 ÷ 358 mm
Net weight	15 kg

**0658****HYDRAULIC JACK**

Capacity	10 ton
Lifting range of foot	30 ÷ 260 mm
Lifting range of head	420 ÷ 665 mm
Net weight	30 kg

**0067****COUPLE JACK STAND**

Height adjustable with fixing pin.



Capacity	2 ton
Heighths	240 - 270 - 320 - 365 mm
Net weight	3 kg

**0069-****COUPLE JACK STAND**

Art.	Capacity	Height min - max	Base dimensions	Net weight
0069/3	3 ton	298 ÷ 428 mm	190 x 210 mm	6,5 kg
0069/6	6 ton	400 ÷ 610 mm	260 x 285 mm	13 kg
0069/10	10 ton	468 ÷ 718 mm	290 x 328 mm	29 kg

## 0021/1

## HYDRAULIC FOLDING CRANE

With two pivoting wheels with brakes, cast iron wheels. Lowering system and pumping lever arranged laterally. The ability to fold the legs when not in use allows it to be stored in confined spaces.



Capacity	1000 kg
Dimensions	1555 x 1010 x 1455h mm
Fold dimensions	720 x 490 x 1520h mm
Min/max boom extension	715 ÷ 990 mm
Hook heights with raised arm	1800 mm @ 1000 kg   1970 mm @ 250 kg
Hook heights with lowered arm	160 mm @ 250 kg   400 mm @ 1000 kg
Front opening	890 mm
Net weight	64,5 kg

## 0021/2

## HYDRAULIC FOLDING CRANE

With two pivoting wheels with brakes, cast iron wheels. Lowering system and pumping lever arranged laterally. The ability to fold the legs when not in use allows it to be stored in confined spaces.



Capacity	2000 kg
Dimensions	1730 x 1025 x 1400h mm
Fold dimensions	760 x 760 x 1635h mm
Min/max boom extension	750÷ 1280 mm
Hook heights with raised arm	1870 mm @ 2000 kg   2280 mm @ 500 kg
Hook heights with lowered arm	0 mm @ 500 kg   430 mm @ 2000 kg
Front opening	910 mm
Net weight	90,5 kg

## 0063

## HYDRAULIC FOLDING CRANE

With two pivoting wheels and rear pad brake, lowering system and pumping lever placed in the rear, cast iron wheels. The ability to fold the legs when not in use allows it to be stored in confined spaces.



Capacity	1000 kg
Dimensions	1800 x 1000 x 1500h mm
Fold dimensions	800 x 860 x 1600h mm
Min/max boom extension	680 ÷ 1220 mm
Hook heights with raised arm	2100 mm @ 1000 kg   2550 mm @ 250 kg
Hook heights with lowered arm	0 mm @ 250 kg   480 mm @ 1000 kg
Front opening	800 mm
Net weight	90 kg

## 0094

## TRANSMISSION JACK

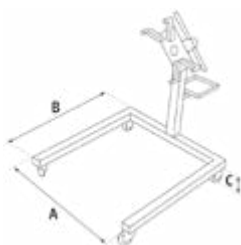
With load limiter, cross support and tilt support to better align and position gearboxes and differentials.



Capacity	500 kg
Dimensions	1190 x 700 x 660 mm
Min - Max height	1190 ÷ 2000 mm
Net weight	32,5 kg

**S033****ENGINE STAND**

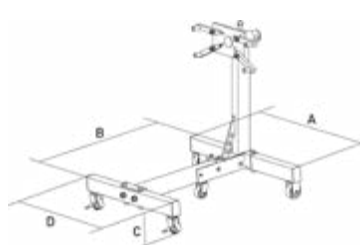
2 swivel wheels with brake and 2 fixed cast iron wheels, possibility to tilt the engine. Equipped with rotating small parts shelf.



Capacity	600 kg
Dimensions	1200 x 840 x 930 mm
Net weight	27,5 kg
A	720 mm
B	840 mm
C	170 mm

**S068****ENGINE STAND**

2 swivel wheels with brake and 2 fixed cast iron wheels, possibility to tilt the engine. The ability to fold it when not in use allows it to be stored in confined spaces.



Capacity	680 kg
Dimensions	860 x 830 x 900 mm
Net weight	31 kg
A	820 mm
B	810 mm
C	180 mm
D	680 mm

**S019****ENGINE STAND**

2 wheels with breaks and 2 fix wheels, possibility to tilt the motor.



Capacity	450 kg	B	810 mm
Dimensions	865 x 810 x 870 mm	C	150 mm
Net weight	21 kg	D	450 mm
A	780 mm		

**S024****ENGINE SUPPORT**

Engine support holds your engine or transmission in place during heavy automotive repairs, used to support the engine while removing gear box, transmission, replacing clutch and all motor mounts. Rubber feet for safe hold of motor, easy regulation for hold engine in its place in the car. swivel and tilting holders.



Capacity	500 kg
Adjusting height	205 mm
Bed length	730 ÷ 1480 mm
Net weight	13 kg

**0147****SHOP CRANE LEVELER**

Shop crane and crane leveler, easy to use, just crank to level, tilts forward and backward for easy motor mount alignment



Capacity	680 kg
Width	440 mm
Max stroke of slide	330 mm
Chain	350 mm
Net weight	5 kg

**R015****CAR RAMPS SET**

Set consisting of two solid ramps to facilitate work under vehicles. These small ramps are suitable for the most common models of small cars and SUVs or even longer vehicles. Made of polypropylene, the wedges are significantly more reliable than steel ramps. In addition, thanks to their non-slip structure, they offer excellent stability. Lightweight and well-shaped, the ramps are easy to transport and space-saving.



Dimensions	905 x 330 x 218 mm
Capacity	2,5 ton
Max tire width	240 mm
Min - Max height	170 mm
Tilting	15°
Net weight	8 kg

## 0649-

### ALUMINUM RAMPS

In aluminum with non-slip floors. Load 170kg.



Art.	Dimensions	Capacity	Max Working angle	Max Working height	Net weight
0649/1500	1520 x 735 mm	170 kg	12,5 % (7°)	180 mm	13,5 kg
0649/1800	1800 x 735 mm	150 kg	12,5 % (7°)	220 mm	16 kg

## 0594

### OIL DRAINER WITHOUT TANK

With wheels, to use under lifts, for waste oil.



Base dimensions	390 x 390 mm
Height max	1700 mm
Net weight	13 kg

## 0595

### OIL DRAINER

With tank and wheels, to use under lifts, for waste oil.



Tank capacity	70 l
Height min - max	1170 ÷ 1860 mm
Maximum tank pressure	0.45 bar
Net weight	23 kg

## 0596

### PNEUMATIC OIL DRAINER

With wheels and different size of suction probes, for waste oil, for use under lifts too.



Tank capacity	70 l
Measuring tank capacity	10 l
Height max	1500 mm
Metal probe	2 x ø6 mm x 695 mm
Nylon probe	2 x ø6 mm x 680 mm   2 x ø8 mm x 700 mm
Suction	ø6 x 4,5 mm - 0,4 ÷ 0,8 l/min   ø8 x 6,5 mm - 1 ÷ 1,6 l/min
Rubber hose length	Suction 1500 mm   Drain 2050 mm
Power pressure	8 ÷ 10 bar
Maximum tank pressure	0.45 bar
Net weight	25 kg

**0630/2720****12V ELECTRIC WINCH - DIRECT CURRENT**

Permanent magnet motor, metal frame, strong cable, with anti unwinding device and cable guide. To be used only for horizontal pulling, not suitable for lifting.

Rated line pull	2720 kg
Speed	1,3 - 4,5 m / min
Motor	12 V 1,3 kW 1,8 hp
Gear Reduction ratio	294:1
Cable size	Ø 7,2 mm x 32 m
Drum dimensions	Ø 63 x 228 mm
Overall dimensions	520 x 180 x 175h mm
Net weight	29 kg

**0630/2200****12V ELECTRIC WINCH - DIRECT CURRENT**

Permanent magnet motor, metal frame, strong cable, with anti unwinding device and cable guide. To be used only for horizontal pulling, not suitable for lifting.

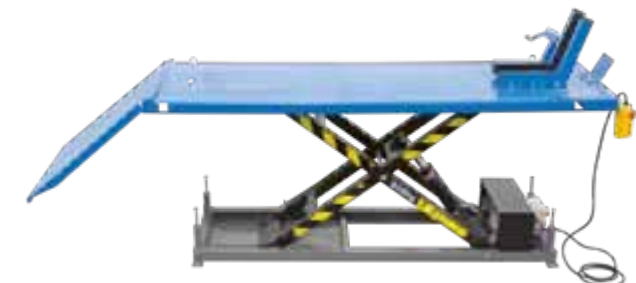
Rated line pull	2000 kg
Speed	1,5 - 3,6 m / min
Motor	12 V 1,0 kW 1,3 hp
Gear reduction ratio	172:1
Cable size	Ø 6,4 mm x 14,5 m
Drum dimensions	Ø 45 x 97 mm
Overall dimensions	364 x 126 x 141h mm
Net weight	13 kg

**0630/0900****12V ELECTRIC WINCH - DIRECT CURRENT**

Permanent magnet motor, metal frame, hook with pulley for double pull, resistant cable, with anti unwinding device and cable guide. To be used only for horizontal pulling, not suitable for lifting.

Rated line pull	450 / 900 kg
Speed	1,3 - 3,2 m / min
Motor	12 V 0,7 kW 0,9 hp
Gear reduction ratio	153:1
Cable size	Ø 4 mm x 15 m
Drum dimensions	Ø 31,5 x 73 mm
Overall dimensions	285 x 105 x 105h mm
Net weight	6,7 kg



**S029**
**ELECTRO-HYDRAULIC MOTORCYCLE LIFT TABLE**


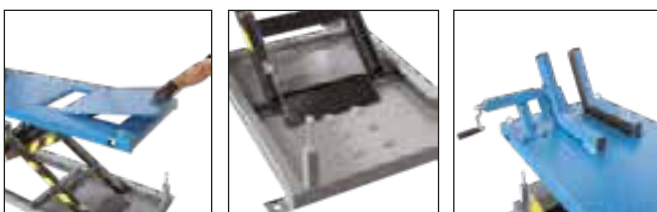
Max lifting capacity	600 kg
Platform dimensions	2200 x 750 mm
Total length	2995 mm
Service hole dimensions	550 x 340 mm
Min - Max height	260 - 520 - 625 - 710 - 780 - 840 mm
Vice	330 x 320 mm
Vice opening	40 ÷ 180 mm
Motor	230 V 50 Hz 550 W
Net weight	225 kg

**S029P**
**ELECTRO-HYDRAULIC MOTORCYCLE LIFT TABLE**

With pump and separate control system that give the possibility to position it at floor level.



Max lifting capacity	600 kg
Platform dimensions	2200 x 750 mm
Total length	2995 mm
Service hole dimensions	550 x 340 mm
Min - Max height	215 - 520 - 625 - 710 - 780 - 840 mm
Vice	330 x 320 mm
Vice opening	40 ÷ 180 mm
Motor	230 V 50 Hz 550 W
Net weight	240 kg

**S027**
**ELECTRO-HYDRAULIC MOTORCYCLE LIFT TABLE**


Max lifting capacity	600 kg
Platform dimensions	1800 x 600 mm
Total length	2600 mm
Service hole dimensions	550 x 340 mm
Min - Max height	260 ÷ 880 mm
Vice	330 x 320 mm
Vice opening	40 ÷ 200 mm
Motor	230 V 50 Hz 550 W
Net weight	150 kg

**S027ATV**
**ELECTRO-HYDRAULIC ATV & MOTORCYCLE LIFT TABLE**


Max lifting capacity	600 kg
Platform dimensions	1800 x 1200 mm
Total length	2600 mm
Service hole dimensions	550 x 340 mm
Min - Max height	260 ÷ 880 mm
Vice	330 x 320 mm
Vice opening	40 ÷ 200 mm
Motor	230 V 50 Hz 550 W
Net weight	235 kg

**S008/M****HYDRAULIC MOTORCYCLE LIFT TABLE**

With foot pump.



Max lifting capacity	400 kg
Platform dimensions	1825 x 660 mm
Total length	2500 mm
Min - Max height	195 ÷ 750 mm
Vice	410 x 100 mm
Vice opening	210 x 50 mm
Net weight	133 kg

**0452****MOTORCYCLE SCISSORS LIFT**

Scissor support stand suitable for use on the floor or on a motorcycle lift to repair bikes, with 2 height adjustable and removable sliding supports.



Max lifting capacity	400 kg
Platform dimensions	450 x 150 mm
Min - Max height	95 ÷ 400 mm
Stand height	55 - 80 mm
Hexagon	22 mm
Net weight	14 kg

**0241****MOTORCYCLE WHEEL BLOCK**

Strong body, simple and easy use, adjustable wheel size, safety lock.



Wheel outer diameter	381 - 533 mm
Overall dimensions	730 x 468 x 440h mm
Net weight	10 kg

**S013****HYDRAULIC LIFT TABLE**

With foot pump and pneumatic control.



Max lifting capacity	600 kg
Platform dimensions	2000 x 1220 mm
Total length	2575 mm
Min - Max height	185 ÷ 825 mm
Net weight	230 kg

**0430****MOTORCYCLE DOLLY**

Powder coated steel. it is suitable for motorcycles and scooters that have the side stand. it allows you to move and to park your bike in tight spaces



Maximum capacity	300 kg
Length	1929 mm
Net weight	33 kg

**0217****VEHICLE POSITIONING JACK**

With wheel positioning brakes.



Capacity	680 kg
Lateral stroke	370 mm
Working range	710 - 340 mm
Max tire width	325 mm
Overall dimensions	730 x 468 x 440h mm
Net weight	15 kg

## S017

### UNIVERSAL TELESCOPIC CART

Adjustable in height and length, made of square steel pipes, after use it can be stored in small space, upper sides with rubber to prevent scratches and give more stability to the leaned object, 4 swivel casters of which 2 with brake, ideal for the car body repair, for repairing and spraying area



Height min - max	840 ÷ 1320 mm
Length	225 ÷ 1380 mm
Width	860 mm
Capacity	100 kg
Net weight	26 kg

## 0645/S

### SHOP SEAT

With pivoting wheels, tool holder base, seat with padding.



Dimensions	440 x 375 x 400 mm
Net weight	4,2 kg

## 0645/CC

### THREE-DRAWER CAR SEAT

Equipped with 3 drawers with bearings, 3 can trays and a small frontal tray, 4 pivoting wheels.



Dimensions	370 x 400 x 367h mm
Drawer dimensions	3 - 150 x 300 x 40 h mm
Net weight	8 kg

## 0645/CP

### PLASTIC CREEPER

Shockproof, with 6 wheels.



Dimensions	1000 x 470 x 120h mm
Net weight	4,8 kg

## 0645/C

### 6 WHEELS CAR CREEPER



Dimensions	1030 x 420 x 100h mm
Net weight	6,5 kg

## 0645/SS

### 2 IN 1 CREEPER AND SEAT



Creeper dimensions	1020 x 410 x 150h mm
Seat dimensions	550 x 410 x 500h mm
Net weight	9 kg

**0256-****HYDRAULIC RAM**

Art.	Maximum capacity	Working pressure	Min-max lifting height	Spindle	Ram stroke	Dimensions	Net weight
0256/05	5 ton	63 Mpa	33 ÷ 39 mm	ø 24 mm	6 mm	45 x 95 mm	0,6 kg
0256/10	10 ton	63.7 Mpa	44 ÷ 55 mm	ø 38 mm	11 mm	56 x 118 mm	1,3 kg
0256/20	20 ton	63.7 Mpa	52 ÷ 63 mm	ø 50 mm	11 mm	76 x 138 mm	2,6 kg
0256/30	30 ton	63.7 Mpa	60 ÷ 72 mm	ø 63 mm	12 mm	95 x 158 mm	4,4 kg
0256/50	50 ton	63.7 Mpa	66 ÷ 78 mm	ø 70 mm	12 mm	118 x 186 mm	6,7 kg

**0062-****BOTTLE JACK**

Hydraulic jack. It provides an excellent stability thanks to its small size. Easy to carry and use.



Art.	Capacity	Min. height	Lifting	Adjusting height	Base dimensions	Ram diameter	Net weight
0062/2	2 ton	181 mm	116 mm	48 mm	90 x 85 mm	Ø 22 mm	2,7 kg
0062/5	5 ton	220 mm	127 mm	70 mm	115 x 100 mm	Ø 32 mm	4,3 kg
0062/10	10 ton	230 mm	150 mm	80 mm	125 x 110 mm	Ø 40 mm	6,5 kg
0062/15	15 ton	230 mm	150 mm	80 mm	140 x 135 mm	Ø 48 mm	8,3 kg
0062/20	20 ton	242 mm	150 mm	60 mm	155 x 145 mm	Ø 53 mm	10,5 kg
0062/32	32 ton	285 mm	180 mm	-	170 x 160 mm	Ø 56 mm	13,5 kg
0062/50	50 ton	295 mm	180 mm	-	215 x 175 mm	Ø 85 mm	29 kg



0010

### LIFT TROLLEY

With foldable handle, mechanical blocking system of the platform, swivel wheels with brakes.



Capacity	500 kg
Table dimensions	850 x 500 x 50 mm
Lifting	290 ÷ 880 mm
Net weight	86 kg

0075

### LIFT TROLLEY

With foldable handle with mechanical blocking system, swivel wheels with brakes.



Capacity	300 kg
Table dimensions	850 x 500 x 50 mm
Lifting	290 ÷ 880 mm
Net weight	78 kg

0467

### HIGH LIFT TROLLEY

With double scissor action, mechanical blocking system of the platform, swivel wheels with brakes.



Capacity	350 kg
Table dimensions	910 x 500 x 53 mm
Lifting	370 ÷ 1300 mm
Net weight	92 kg

**C650****THREE SHELVES TROLLEY**

Strong and easy to assemble, 2 swivel and 2 fixed casters.



Dimensions	800 x 450 x 800h mm
Steel thickness	1.5 mm
Wheels	ø 80 mm
Capacity	100 kg
Net weight	17 kg

**C750****THREE SHELVES TROLLEY**

Strong and easy to assemble, 2 swivel and 2 fixed casters.



Dimensions	940 x 600 x 870h mm
Steel thickness	2,3 mm
Wheels	ø 150 mm
Capacity	200 kg
Net weight	52 kg

**C065/2****PP TWO SHELVES TOOL CART**

Light weight, strong and easy to assemble, 2 swivel and 2 fixed casters.



Dimensions	1010 x 440 x 840h mm
Wheels	ø 125 mm
Capacity	250 kg
Working temperature	-20°C a +50°C
Net weight	15,5 kg

**C075/2****PP TWO SHELVES TOOL CART**

Light weight, strong and easy to assemble, 2 swivel and 2 fixed casters.



Dimensions	1170 x 652 x 840h mm
Wheels	ø 125 mm
Capacity	250 kg
Net weight	22,5 kg

**C009****CART WITH WOODEN SHELF**

Cart made of steel, with 2 fixed wheels and 2 swivel wheels with brake.



Overall dimensions	1000 x 800 x 810 h mm
Steel thickness	2 mm
Plate thickness	36 mm
Wheels	ø 150 mm
Capacity	150 kg
Net weight	52 kg

**Cx****PVC PLATFORM TROLLEY**

With foldable handle, 2 fixed casters and 2 swivel casters.



Art.	Wheels	Capacity	Platform dimensions	Height	Net weight
C150	Ø 100 mm	150 kg	700 x 450 mm	820 mm	7,8 kg
C300	Ø 125 mm	300 kg	900 x 600 mm	890 mm	13,4 kg

## C170P

NEW

### FOLDING ALUMINIUM HAND TRUCK

Folding hand truck with automatic opening through a simple push on the toe plate. Automatic locking in the open or closed position. Telescopic structure and toe plate in aluminum.



Wheel sizes	Ø 125 x 28 mm
Hole diameter	6 mm
Capacity	70 kg
Toe plate dimensions	385 x 275 mm
Net weight	3,00 kg
Dimensions	385 x 410 x 985 h mm
Overall dimensions	385 x 55 x 635 h mm

## C1101

NEW

### HAND TRUCK WITH SOLID WHEELS

For flower pots and boxes, safety handles, epoxy painting.



Wheel sizes	Ø 200 x 40 mm
Hole diameter	12 mm
Capacity	80 kg
Toe plate dimensions	350 x 180 mm
Net weight	5,70 kg
Dimensions	460 x 370 x 1000 h mm

## C1102

NEW

### HAND TRUCK WITH PNEUMATIC WHEELS

For flower pots and boxes, safety handles, epoxy painting.



Pneumatic wheels	Ø 260 x 85 mm
Capacity	200 kg
Toe plate dimensions	450 x 215 mm
Net weight	8,5 kg

## C182

### ALUMINIUM HAND TRUCK WITH PNEUMATIC WHEELS

Aluminium.



Pneumatic wheels	Ø 260 x 85 mm
Capacity	200 kg
Toe plate dimensions	300 x 205 mm
Net weight	6 kg

## C189

### MULTIFUNCTION HAND TRUCK

With pneumatic wheels for firewood, pots, boxes and other objects. strong, easy to handle and versatile. Plastic handles.



Pneumatic wheels	Ø 260 x 85 mm
Capacity	150 kg
Toe plate dimensions	400 x 250 mm
Movable grid	340 x 390 mm
Net weight	11,5 kg

## C183

NEW

### STAIR-CLIMBING HAND TRUCK

Safety handles, epoxy painting.



Wheel sizes	Ø 155 x 42 mm
Hole diameter	16 mm
Capacity	200 kg
Toe plate dimensions	310 x 220 mm
Net weight	13,5 kg
Dimensions	500 x 620 x 1180 h mm

**C184****NEW****2-IN-1 HAND TRUCK**

Can be used in two positions to facilitate the handling of heavy and bulky loads.



Pneumatic wheels	Ø 260 x 83 mm
Mobile wheels	Ø 100 x 23 mm
Hole diameter	20 mm - 10 mm
Capacity	250 kg
Toe plate dimensions	390 x 140 mm
Movable grid	325 x 335 mm
Platform dimensions	380 x 850 mm
Net weight	12 kg
Dimensions	590 x 420 x 1117 h mm - 590 x 1117 x 1050 h mm

**P019****FOLDING ANTISLIP PLATFORM**

Antislip professional, made of aluminum, easy to use, suitable for a wide range of activities in different sectors, such as: home, auto and others.



Capacity	150 kg
Dimensions	1260x380x500 mm
Platform dimensions	950x300 mm
Net weight	7,5 kg

**0237-****LEVER CHAIN HOIST**

Art.	Capacity	Lifting	Net weight
0237/05	500 kg	1500 mm	5 kg
0237/15	1500 kg	1500 mm	10 kg

**0461****POLYURETHANE WHEEL**

260 x 85 mm not pierceable, with Ø 20 mm bearing and adapter from 20 mm to 18 mm, for hand trucks with 18-20 mm wheel shaft.



Wheel sizes	250 x 75 mm
Hole sizes	Ø 20 - 18 x 74 mm

**0056-****CHAIN HOIST**

Art.	Capacity	Lifting	Net weight
0056/1	1000 kg	3000 mm	11 kg
0056/2	2000 kg	3000 mm	20 kg

**0236****HOIST ARM**

Capacity	300 kg
Arm length	750 mm
Slot distance	380 mm
Stem	45 X 45 mm <sup>2</sup>
Net weight	6 kg

## 0602

### ELECTRIC CABLE HOIST

With steel cable and mechanical limit switch.



Capacity	200 / 400 kg
Cable length	18 m
Speed	8 m/min
Motor	230 V 50 Hz 1 kW
Net weight	16,7 kg



## 0600

### ELECTRIC CABLE HOIST

With steel cable and mechanical limit switch



Capacity	200 / 400 kg
Cable length	18 m
Speed	8 m / min
Motor	230 V 50 Hz 0,75 kW
Net weight	16,7 kg



## Sx

### MAGNETIC LIFTER

Neodymium.

Art.	Maximum capacity	Round bar lifting cap.	Min-max lifting diameter	Dimensions	Net weight
S0300	300 kg	100 kg	50 ÷ 300 mm	189 x 163 x 92 (B) mm	9,5 kg
S0600	600 kg	200 kg	70 ÷ 400 mm	267 x 198 x 129 (B) mm	19 kg
S1000	1000 kg	330 kg	75 ÷ 450 mm	350 x 277 x 156 (B) mm	36 kg



## PDC4-

### CHAIN SLINGS

Grade 80 alloy steel with shortening hook, security factor 4:1, the vertical capacity is calculated on 3 arms only because the fourth arm is necessary only to equilibrate the loading. EN 818-4.



Art.	Length	Capacity 0°	Capacity 45°	Chain	Hook
PDC4/7/2	2000 mm	3150	2240	ø 7 mm	SLF
PDC4/7/3	3000 mm	3150	2240	ø 7 mm	SLF
PDC4/7/4	4000 mm	3150	2240	ø 7 mm	SLF
PDC4/10/2	2000 mm	6700	4750	ø 10 mm	SLF
PDC4/10/3	3000 mm	6700	4750	ø 10 mm	SLF
PDC4/10/4	4000 mm	6700	4750	ø 10 mm	SLF



**PDC2-****CHAIN SLINGS**

Grade 80 alloy steel, with shortening hooks, security factor 4:1. EN 818-4.



Art.	Length	Capacity 0°	Capacity 45°	Chain	Hook
PDC2/7/2	2000 mm	2120	1500	ø 7 mm	SLF
PDC2/7/3	3000 mm	2120	1500	ø 7 mm	SLF
PDC2/7/4	4000 mm	2120	1500	ø 7 mm	SLF
PDC2/10/2	2000 mm	4250	3150	ø 10 mm	SLF
PDC2/10/3	3000 mm	4250	3150	ø 10 mm	SLF
PDC2/10/4	4000 mm	4250	3150	ø 10 mm	SLF

**PDC1-****CHAIN SLINGS**

Grade 80 alloy steel, with shortening hook, security factor 4:1. EN 818-4.



Art.	Length	Vertical capacity	Chain	Hook
PDC1/7/1	1000 mm	1500 kg	ø 7 mm	SLF
PDC1/7/2	2000 mm	1500 kg	ø 7 mm	SLF
PDC1/10/1	1000 mm	3150 kg	ø 10 mm	SLF
PDC1/10/2	2000 mm	3150 kg	ø 10 mm	SLF

**06x****LASHING SYSTEM WITH POLYESTER RIBBON DRAFT**

EN 12195-2.



Art.	Strap ribbon with turnbuckle	Ribbon width	Capacity	Hooks
0635	5,50 + 0,50 m	35 mm	1000 kg	2
0650	8,00 + 0,50 m	50 mm	2000 kg	2
0675	10,00 + 1,00 m	75 mm	3000 kg	2

**0635/25****LASHING SYSTEM WITH POLYESTERE RIBBON DRAFT**

EN 12195-2.



Strap ribbon mm 25 with turnbuckle and 2 hooks	4,00 + 0,30 m
Capacity	250 kg

**AN2G/12/1****2 STEEL ARMS PENDING**

Rope	ø 12 mm
Length	1000 mm
Capacity	30° 2600 kg
Capacity	90° 2100 kg

## x-1000

### POLYESTER COLORED SLINGS

Double layer band lifting system, standard, security factor 7:1. EN 1492-1.

Art.	m	Width	Color	Eye length	Vertical capacity	Capacity basket	Basket capacity β 45° kg	Basket capacity β 60° kg	Capacity choker
1/1000	1	50 mm	Purple	250 mm	1000 kg	2000 kg	1400	1000	800 kg
2/1000	2	50 mm	Purple	250 mm	1000 kg	2000 kg	1400	1000	800 kg
3/1000	3	50 mm	Purple	250 mm	1000 kg	2000 kg	1400	1000	800 kg
4/1000	4	50 mm	Purple	250 mm	1000 kg	2000 kg	1400	1000	800 kg



## x-2000

### POLYESTER COLORED SLINGS

Double layer band lifting system, security factor 7:1. EN 1492-1.

Art.	m	Width	Color	Eye length	Vertical capacity	Capacity basket	Basket capacity β 45° kg	Basket capacity β 60° kg	Capacity choker
1/2000	1	60 mm	Green	250 mm	2000 kg	4000 kg	2800	2000	1600 kg
2/2000	2	60 mm	Green	250 mm	2000 kg	4000 kg	2800	2000	1600 kg
3/2000	3	60 mm	Green	250 mm	2000 kg	4000 kg	2800	2000	1600 kg
4/2000	4	60 mm	Green	250 mm	2000 kg	4000 kg	2800	2000	1600 kg
5/2000	5	60 mm	Green	250 mm	2000 kg	4000 kg	2800	2000	1600 kg
6/2000	6	60 mm	Green	250 mm	2000 kg	4000 kg	2800	2000	1600 kg



## x-3000

### POLYESTER COLORED SLINGS

Double layer band lifting system, security factor 7:1. EN 1492-1.

Art.	m	Width	Color	Eye length	Vertical capacity	Capacity basket	Basket capacity β 45° kg	Basket capacity β 60° kg	Capacity choker
1/3000	1	90 mm	Yellow	300 mm	3000 kg	6000 kg	4200	3000	2400 kg
2/3000	2	90 mm	Yellow	300 mm	3000 kg	6000 kg	4200	3000	2400 kg
3/3000	3	90 mm	Yellow	300 mm	3000 kg	6000 kg	4200	3000	2400 kg
4/3000	4	90 mm	Yellow	300 mm	3000 kg	6000 kg	4200	3000	2400 kg
5/3000	5	90 mm	Yellow	300 mm	3000 kg	6000 kg	4200	3000	2400 kg
6/3000	6	90 mm	Yellow	300 mm	3000 kg	6000 kg	4200	3000	2400 kg



## FTx-1000

### POLYESTER ROUND SLINGS

External sleeve security factor 7:1. EN 1492-2.

Art.	Ring	Color	Vertical	Capacity basket	Basket capacity β 45° kg	Basket capacity β 60° kg	Capacity choker
FT1/1000	1 m	Purple	1000 kg	2000 kg	1400	1000	800 kg
FT2/1000	2 m	Purple	1000 kg	2000 kg	1400	1000	800 kg
FT3/1000	3 m	Purple	1000 kg	2000 kg	1400	1000	800 kg
FT4/1000	4 m	Purple	1000 kg	2000 kg	1400	1000	800 kg
FT5/1000	5 m	Purple	1000 kg	2000 kg	1400	1000	800 kg
FT6/1000	6 m	Purple	1000 kg	2000 kg	1400	1000	800 kg



## FTx-2000

### POLYESTER ROUND SLINGS

External sleeve security factor 7:1. EN 1492-2.

Art.	€	Ring	Color	Vertical	Capacity basket	Basket capacity β 45° kg	Basket capacity β 60° kg	Capacity choker
FT1/2000	€ 10,10	1 m	Green	2000 kg	4000 kg	2800	2000	1600 kg
FT2/2000	€ 12,50	2 m	Green	2000 kg	4000 kg	2800	2000	1600 kg
FT3/2000	€ 21,00	3 m	Green	2000 kg	4000 kg	2800	2000	1600 kg
FT4/2000	€ 26,60	4 m	Green	2000 kg	4000 kg	2800	2000	1600 kg
FT5/2000	€ 29,50	5 m	Green	2000 kg	4000 kg	2800	2000	1600 kg
FT6/2000	€ 35,20	6 m	Green	2000 kg	4000 kg	2800	2000	1600 kg



## FTx-3000

### POLYESTER ROUND SLINGS

External sleeve security factor 7:1. EN 1492-2.

Art.	€	Ring	Color	Vertical	Capacity basket	Basket capacity β 45° kg	Basket capacity β 60° kg	Capacity choker
FT1/3000	€ 12,50	1 m	Yellow	3000 kg	6000 kg	4200	3000	2400 kg
FT2/3000	€ 18,50	2 m	Yellow	3000 kg	6000 kg	4200	3000	2400 kg
FT3/3000	€ 26,60	3 m	Yellow	3000 kg	6000 kg	4200	3000	2400 kg
FT4/3000	€ 34,60	4 m	Yellow	3000 kg	6000 kg	4200	3000	2400 kg
FT5/3000	€ 40,40	5 m	Yellow	3000 kg	6000 kg	4200	3000	2400 kg
FT6/3000	€ 50,60	6 m	Yellow	3000 kg	6000 kg	4200	3000	2400 kg



**0791-****WIRE ROPE PULLING HOIST**

For pulling and lifting.



Art.	Max load	Cable	Net weight
0791/08	800 kg	ø 8,3 mm x 20m	11 kg
0791/16	1600 kg	ø 11mm x 20m	24 kg
0791/32	3200 kg	ø 16 mm x 20m	50 kg

**0066****DOUBLE RATCHET HAND PULLER**

Max load	800 kg
Cable diameter	ø 5 mm
Max length	2 m
Net weight	2,7 kg

**0070/C****GEARED HAND WINCH**

Zinc-plated.



Max load	500 kg
Throat width	50 mm
Max ø wheel	133 mm
Min. ø wheel	40 mm
Cable size	ø 4,5 mm x 10 m
Base dimensions	140 x 90 mm

**0070****GEARED HAND WINCH**

Frame in galvanized steel. Ergonomic handle.



Max load	500 kg
Throat width	50 mm
Max ø wheel	133 mm
Min. ø wheel	40 mm
Base dimensions	140 x 90 mm

**0590****HAND OPERATED WINCH WITH BRAKE**

Max load	450 kg
Throat width	49 mm
Max ø wheel	110 mm
Min. ø wheel	45 mm
Overall dimensions without handle	170 x 150 x 125h mm



## 0068/S

### TRUCK PALLET WITH SCALE AND PRINTER

Not legal for trade, tare function powered by rechargeable battery, polyurethane wheels.



Capacity	2000 kg
Weight capacity	2000 kg
Fork height	88 ÷ 200 mm
Fork dimensions	1150 x 568 mm
Reading	1 kg
Accuracy	±2 kg
Printer	Yes
Front wheel	Double
Net weight	160 kg

## 0068L

### TRUCK PALLET WITH SCALE

Truck pallet with scale not legal for trade, tare function powered by replaceable batteries. With polyurethane wheels.



Capacity	2000 kg
Weight capacity	2000 kg
Fork height	85 ÷ 175 mm
Fork dimensions	1150 x 570 mm
Reading	0,5 kg
Accuracy	±0,05% kg
Front wheel	Double
Net weight	125 kg

## 0028R

### LOWERED MANUAL PALLET TRUCK

With polyurethane wheels.



Capacity	2500 kg
Fork height	63 ÷ 165 mm
Fork dimensions	1150 x 540 mm
Armor plate thickness	3 mm
Front wheel	Double
Net weight	68,5 kg

## 0028

### MANUAL TRUCK -PALLET

With polyurethane wheels.



Capacity	2500 kg
Fork height	85 ÷ 200 mm
Fork dimensions	1150 x 540 mm
Armor plate thickness	3 mm
Front wheel	Double
Net weight	71,5 kg

## 0028-XL

### MANUAL TRUCK-PALLET LONG FORKS

With polyurethane wheels.

**NEW**


Art.	Capacity	Fork height	Fork dimensions	Armor plate thickness	Front wheel	Net weight
0028/1500	2000 kg	85 ÷ 200 mm	1500 x 540 mm	3 mm	Double	86 kg
0028/1800	2000 kg	85 ÷ 200 mm	1800 x 540 mm	3 mm	Double	96 kg
0028/2000	2000 kg	85 ÷ 200 mm	2000 x 540 mm	3 mm	Double	102 kg

**0064****MANUAL TRUCK -PALLET**

With polyurethane wheels.



Capacity	2500 kg
Fork height	85 ÷ 200 mm
Fork dimensions	900 x 540 mm
Armor plate thickness	3 mm
Front wheel	Single
Net weight	68,5 kg

**S2/800****HIGH LIFT TRUCK-PALLET**

Scissors.



Capacity	1000 kg
Fork height	85 ÷ 800 mm
Fork dimensions	1170 x 540 mm
Tire	Polyurethane
Front wheel	Single
Net weight	117 kg



## 0782

### PLATFORM STACKER WITH FORKS



Capacity	400 kg
Fork height	85 ÷ 1500 mm
Fork dimensions	545 x 650 mm
Platform	576 x 650 mm
Mobile wheels	Ø 127 x 40 mm
Fix wheels	Ø 75 x 40 mm
Tire	Polyurethane
Dimensions	1100 x 600 x 1725h mm
Net weight	95 kg



## 0143A

### MANUAL STACKER

With brake and lifting foot pedal.



Capacity	1000 kg
Fork height	90 ÷ 1600 mm
Fork dimensions	1150 x 550 mm
Fork section	160 x 55 mm
Upright height	2100 mm
Tire	Polyurethane
Front wheel	Double
Dimensions	920 x 1670 x 2100h mm
Net weight	250 kg



## 0143/25

### MANUAL STACKER

With double telescopic mast, brake and lifting pedal.



Capacity	1000 / 800 kg
Fork height	75 ÷ 1600 ÷ 2500 mm
Fork dimensions	1150 x 550 mm
Fork section	160 x 55 mm
Upright height	1840 mm
Tire	Polyurethane
Front wheel	Double
Dimensions	1670 x 920 x 1840h mm
Net weight	310 kg



**0654-xL****TRANSPORT TROLLEY**

With nylon wheels and hook for towing.



Art.	Capacity	Working height	Roller dimensions	Wheels	Table dimensions	Handle length	Handle swivel range	Dimensions	Net weight
0654/06L	6 Ton	110 mm	85 x 85 mm	8	Ø 170 mm	1080 mm	±90°	610 x 520 mm	41 kg
0654/09L	9 Ton	110 mm	85 x 85 mm	12	Ø 170 mm	1080 mm	±90°	840 x 583 mm	59 kg
0654/12L	12 Ton	110 mm	85 x 85 mm	16	Ø 170 mm	1080 mm	±90°	1030 x 620 mm	80 kg

**0654-xF****TRANSPORT TROLLEY**

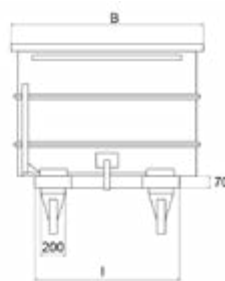
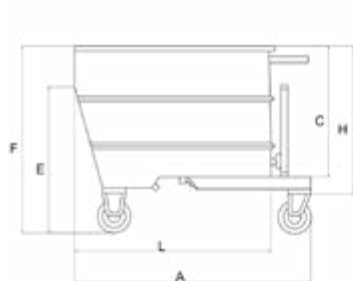
With nylon wheels.



Art.	Capacity	Working height	Roller dimensions	Wheels	Table dimensions	Lever bar length	Net weight
0654/06F	6 Ton	110 mm	85 x 85 mm	4	200 x 220 mm	640 ÷ 1030 mm	30 kg
0654/09F	9 Ton	110 mm	85 x 85 mm	6	200 x 320 mm	840 ÷ 1230 mm	43 kg
0654/12F	12 Ton	110 mm	85 x 85 mm	8	200 x 407 mm	1104 ÷ 1430 mm	52 kg

**C030-****SCRAP DUMPING CONTAINER EQUIPPED WITH WHEELS**

Additional colors and accessories available upon request.



Art.	Liters	A	B	C	E	F	H	I	L	Capacity	Wheels	Net weight
C030/0300	300	1280 mm	820 mm	395 mm	530 mm	650 mm	490 mm	700 mm	1010 mm	600 kg	Ø 125 mm x 165h mm	95 kg
C030/0500	500	1280 mm	920 mm	600 mm	750 mm	915 mm	710 mm	800 mm	1010 mm	1000 kg	Ø 180 mm x 210h mm	130 kg
C030/0750	750	1280 mm	1070 mm	730 mm	800 mm	1035 mm	830 mm	800 mm	1055 mm	1350 kg	Ø 180 mm x 210h mm	150 kg
C030/1000	1000	1510 mm	1070 mm	870 mm	925 mm	1220 mm	975 mm	800 mm	1255 mm	1700 kg	Ø 200 mm x 245h mm	182 kg
C030/1350	1350	1510 mm	1320 mm	870 mm	925 mm	1220 mm	975 mm	800 mm	1255 mm	2000 kg	Ø 200 mm x 245h mm	205 kg